
Product Name: Tctex5 Rabbit Polyclonal Antibody**Catalog #: APRab18755**

For research use only.

Summary

Description	Rabbit polyclonal Antibody
Host	Rabbit
Application	IHC,ICC/IF,ELISA
Reactivity	Human,Mouse,Rat
Conjugation	Unconjugated
Modification	Unmodified
Isotype	IgG
Clonality	Polyclonal
Form	Liquid
Concentration	1mg/ml
Storage	Aliquot and store at -20°C (valid for 12 months). Avoid freeze/thaw cycles.
Shipping	Ice bags
Buffer	Liquid in PBS containing 50% glycerol, 0.5% protective protein and 0.02% New type preservative N.
Purification	Affinity purification

Application

Dilution Ratio IHC 1:100-1:300,ICC/IF 1:50-1:200,ELISA 1:20000-1:40000

Molecular Weight

Antigen Information

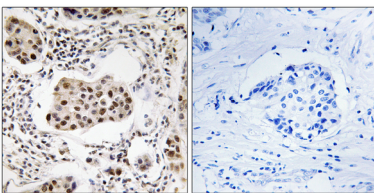
Gene Name	PPP1R11
Alternative Names	PPP1R11; HCGV; TCTE5; Protein phosphatase 1 regulatory subunit 11; Hemochromatosis candidate gene V protein; HCG V; Protein phosphatase inhibitor 3
Gene ID	6992.0
SwissProt ID	O60927
Immunogen	The antiserum was produced against synthesized peptide derived from human PPP1R11. AA range:71-120

Background

This gene encodes a specific inhibitor of protein phosphatase-1 (PP1) with a differential sensitivity toward the metal-independent and metal-dependent forms of PP1. The gene is located within the major histocompatibility complex class I region on chromosome 6. [provided by RefSeq, Jul 2008],function:Inhibitor of protein phosphatase 1.,tissue specificity:Widely expressed.,

Research Area

Image Data



Immunohistochemistry analysis of paraffin-embedded human breast carcinoma tissue, using PPP1R11 Antibody. The picture on the right is blocked with the synthesized peptide.