
Product Name: TCP-1 θ Rabbit Polyclonal Antibody**Catalog #: APRab18748**

For research use only.

Summary

Description	Rabbit polyclonal Antibody
Host	Rabbit
Application	WB,ELISA
Reactivity	Human,Mouse
Conjugation	Unconjugated
Modification	Unmodified
Isotype	IgG
Clonality	Polyclonal
Form	Liquid
Concentration	1mg/ml
Storage	Aliquot and store at -20°C (valid for 12 months). Avoid freeze/thaw cycles.
Shipping	Ice bags
Buffer	Liquid in PBS containing 50% glycerol, 0.5% protective protein and 0.02% New type preservative N.
Purification	Affinity purification

Application

Dilution Ratio	WB 1:500-1:2000,ELISA 1:5000-1:10000
Molecular Weight	60kDa

Antigen Information

Gene Name	CCT8
Alternative Names	CCT8; C21orf112; CCTQ; KIAA0002; T-complex protein 1 subunit theta; TCP-1-theta; CCT-theta; Renal carcinoma antigen NY-REN-15
Gene ID	10694.0
SwissProt ID	P50990
Immunogen	The antiserum was produced against synthesized peptide derived from human CCT8. AA range:361-410

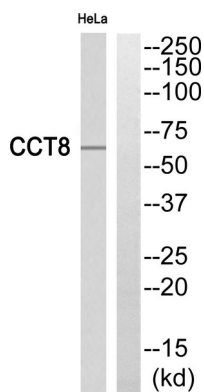
Background

This gene encodes the theta subunit of the CCT chaperonin, which is abundant in the eukaryotic cytosol and may be involved in the transport and assembly of newly synthesized proteins. Alternative splicing results in multiple transcript variants of this gene. A pseudogene related to this gene is located on chromosome 1. [provided by RefSeq, Sep 2013],function:Molecular chaperone; assist the folding of proteins upon ATP hydrolysis. Known to play a role, in vitro, in the folding of actin and tubulin.,similarity:Belongs to the TCP-1 chaperonin family.,subunit:Heterooligomeric complex of about 850 to 900 kDa that forms two stacked rings, 12 to 16 nm in diameter. Interacts with PACRG.,

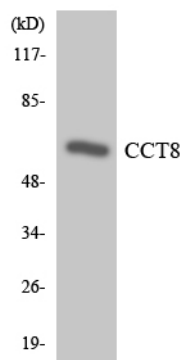
Research Area

Signal Transduction; Protein Trafficking; Chaperones; Other Chaperones

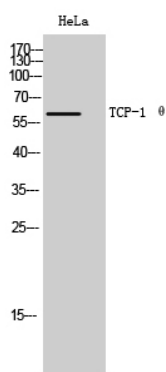
Image Data



Western blot analysis of CCT8 Antibody. The lane on the right is blocked with the CCT8 peptide.



Western blot analysis of the lysates from HeLa cells using CCT8 antibody.



Western Blot analysis of HeLa cells using TCP-1 θ Polyclonal Antibody

