

**Product Name: TCP-1  $\eta$  Rabbit Polyclonal Antibody****Catalog #: APRab18747**

For research use only.

**Summary**

<b>Description</b>	Rabbit polyclonal Antibody
<b>Host</b>	Rabbit
<b>Application</b>	WB,ELISA
<b>Reactivity</b>	Human,Mouse,Rat
<b>Conjugation</b>	Unconjugated
<b>Modification</b>	Unmodified
<b>Isotype</b>	IgG
<b>Clonality</b>	Polyclonal
<b>Form</b>	Liquid
<b>Concentration</b>	1mg/ml
<b>Storage</b>	Aliquot and store at -20°C (valid for 12 months). Avoid freeze/thaw cycles.
<b>Shipping</b>	Ice bags
<b>Buffer</b>	Liquid in PBS containing 50% glycerol, 0.5% protective protein and 0.02% New type preservative N.
<b>Purification</b>	Affinity purification

**Application**

<b>Dilution Ratio</b>	WB 1:500-1:2000,ELISA 1:5000-1:10000
<b>Molecular Weight</b>	59kDa

**Antigen Information**

<b>Gene Name</b>	CCT7
<b>Alternative Names</b>	CCT7; CCTH; NIP7-1; T-complex protein 1 subunit eta; TCP-1-eta; CCT-eta; HIV-1 Nef-interacting protein
<b>Gene ID</b>	10574.0
<b>SwissProt ID</b>	Q99832
<b>Immunogen</b>	The antiserum was produced against synthesized peptide derived from human CCT7. AA range:221-270

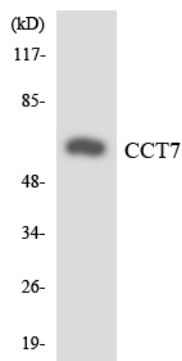
**Background**

This gene encodes a molecular chaperone that is a member of the chaperonin containing TCP1 complex (CCT), also known as the TCP1 ring complex (TRiC). This complex consists of two identical stacked rings, each containing eight different proteins. Unfolded polypeptides enter the central cavity of the complex and are folded in an ATP-dependent manner. The complex folds various proteins, including actin and tubulin. Alternative splicing results in multiple transcript variants. Related pseudogenes have been identified on chromosomes 5 and 6. [provided by RefSeq, Oct 2009],function:Molecular chaperone; assist the folding of proteins upon ATP hydrolysis. Known to play a role, in vitro, in the folding of actin and tubulin.,similarity:Belongs to the chaperonin (HSP60) family.,similarity:Belongs to the TCP-1 chaperonin family.,subunit:Heterooligomeric complex of about 850 to 900 kDa that forms two stacked rings, 12 to 16 nm in diameter. Interacts with PACRG.,

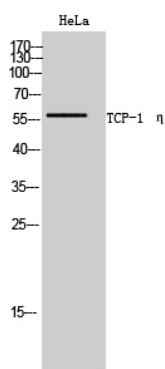
## Research Area

Signal Transduction; Signaling Pathway; Calcium Signaling; Protein Trafficking; Chaperones; Other Chaperones; Immunology; Immune System Diseases; Antiviral Signaling; HIV-related

## Image Data



Western blot analysis of the lysates from HT-29 cells using CCT7 antibody.



Western Blot analysis of HeLa cells using TCP-1  $\eta$  Polyclonal Antibody