

Product Name: TCEAL4 Rabbit Polyclonal Antibody**Catalog #: APRab18725**

For research use only.

Summary

Description	Rabbit polyclonal Antibody
Host	Rabbit
Application	IHC, ICC/IF, ELISA
Reactivity	Human, Rat, Mouse
Conjugation	Unconjugated
Modification	Unmodified
Isotype	IgG
Clonality	Polyclonal
Form	Liquid
Concentration	1mg/ml
Storage	Aliquot and store at -20°C (valid for 12 months). Avoid freeze/thaw cycles.
Shipping	Ice bags
Buffer	Liquid in PBS containing 50% glycerol, 0.5% protective protein and 0.02% New type preservative N.
Purification	Affinity purification

Application

Dilution Ratio IHC 1:100-1:300, ICC/IF 1:50-1:200, ELISA 1:10000-1:20000

Molecular Weight

Antigen Information

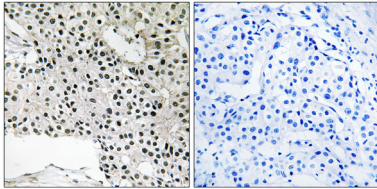
Gene Name	TCEAL4
Alternative Names	TCEAL4; NPD017; Transcription elongation factor A protein-like 4; TCEA-like protein 4; Transcription elongation factor S-II protein-like 4
Gene ID	79921.0
SwissProt ID	Q96EI5
Immunogen	The antiserum was produced against synthesized peptide derived from human TCEAL4. AA range:166-215

Background

This gene encodes a member of the transcription elongation factor A (SII)-like (TCEAL) gene family. This family is comprised of nuclear phosphoproteins that modulate transcription in a promoter context-dependent manner. Multiple family members are located on the X chromosome. Alternatively splicing results in multiple transcript variants. There is a pseudogene for this gene on chromosome 13. [provided by RefSeq, Apr 2015],function:May be involved in transcriptional regulation.,similarity:Belongs to the TFS-II family. TFA subfamily.,

Research Area

Image Data



Immunohistochemistry analysis of paraffin-embedded human breast carcinoma, using TCEAL4 Antibody. The picture on the right is blocked with the synthesized peptide.