
Product Name: TBPL2 Rabbit Polyclonal Antibody**Catalog #: APRab18695**

For research use only.

Summary

Description	Rabbit polyclonal Antibody
Host	Rabbit
Application	WB,IHC,ICC/IF,ELISA
Reactivity	Human,Rat,Mouse
Conjugation	Unconjugated
Modification	Unmodified
Isotype	IgG
Clonality	Polyclonal
Form	Liquid
Concentration	1mg/ml
Storage	Aliquot and store at -20°C (valid for 12 months). Avoid freeze/thaw cycles.
Shipping	Ice bags
Buffer	Liquid in PBS containing 50% glycerol, 0.5% protective protein and 0.02% New type preservative N.
Purification	Affinity purification

Application

Dilution Ratio	WB 1:500-1:2000,IHC 1:100-1:300,ICC/IF 1:50-1:200,ELISA 1:5000-1:10000
Molecular Weight	41kDa

Antigen Information

Gene Name	TBPL2
Alternative Names	TBPL2; TBP2; TRF3; TATA box-binding protein-like protein 2; TBP-like protein 2; TATA box-binding protein-related factor 3; TBP-related factor 3
Gene ID	387332.0
SwissProt ID	Q6SJ96
Immunogen	The antiserum was produced against synthesized peptide derived from human TBPL2. AA range:81-130

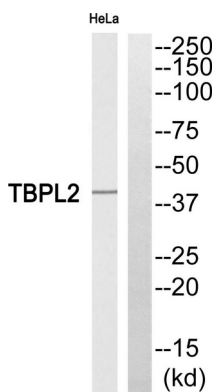
Background

function:Transcription factor required in complex with TAF3 for the differentiation of myoblasts into myocytes. The complex replaces TFIIID at specific promoters at an early stage in the differentiation process.,similarity:Belongs to the TBP family.,subcellular location:Present in the cytoplasm during cytokinesis.,subunit:Interacts with TAF3.,tissue specificity:Ubiquitously expressed in all tissues examined with highest levels in heart, lung, ovary, spleen and testes.,function:Transcription factor required in complex with TAF3 for the differentiation of myoblasts into myocytes. The complex replaces TFIIID at specific promoters at an early stage in the differentiation process.,similarity:Belongs to the TBP family.,subcellular location:Present in the cytoplasm during cytokinesis.,subunit:Interacts with TAF3.,tissue specificity:Ubiquitously expressed in all tissues examined with highest levels in heart, lung, ovary, spleen and testes.,

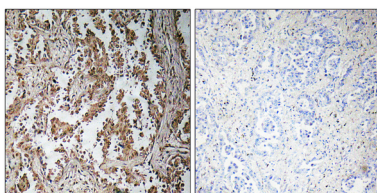
Research Area

Basal transcription factors;Huntington's disease;

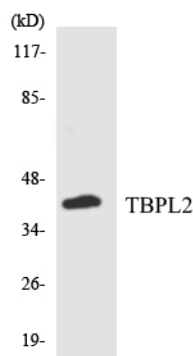
Image Data



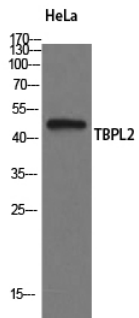
Western blot analysis of TBPL2 Antibody. The lane on the right is blocked with the TBPL2 peptide.



Immunohistochemistry analysis of paraffin-embedded human lung carcinoma, using TBPL2 Antibody. The lane on the right is blocked with the TBPL2 peptide.



Western blot analysis of the lysates from COLO205 cells using TBPL2 antibody.



Western Blot analysis of HeLa cells using TBPL2 Polyclonal Antibody