

Product Name: TBL2 Rabbit Polyclonal Antibody**Catalog #: APRab18692**

For research use only.

Summary

Description	Rabbit polyclonal Antibody
Host	Rabbit
Application	WB,IHC,ICC/IF,ELISA
Reactivity	Human,Rat,Mouse
Conjugation	Unconjugated
Modification	Unmodified
Isotype	IgG
Clonality	Polyclonal
Form	Liquid
Concentration	1mg/ml
Storage	Aliquot and store at -20°C (valid for 12 months). Avoid freeze/thaw cycles.
Shipping	Ice bags
Buffer	Liquid in PBS containing 50% glycerol, 0.5% protective protein and 0.02% New type preservative N.
Purification	Affinity purification

Application

Dilution Ratio	WB 1:500-1:2000,IHC 1:100-1:300,ICC/IF 1:50-1:200,ELISA 1:5000-1:10000
Molecular Weight	50kDa

Antigen Information

Gene Name	TBL2
Alternative Names	TBL2; WBSCR13; Transducin beta-like protein 2; WS beta-transducin repeats protein; WS-betaTRP; Williams-Beuren syndrome chromosomal region 13 protein
Gene ID	26608.0
SwissProt ID	Q9Y4P3
Immunogen	The antiserum was produced against synthesized peptide derived from human TBL2. AA range:381-430

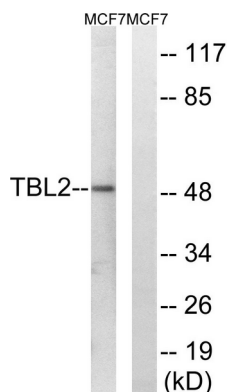
Background

This gene encodes a member of the beta-transducin protein family. Most proteins of the beta-transducin family are involved in regulatory functions. This protein is possibly involved in some intracellular signaling pathway. This gene is deleted in Williams-Beuren syndrome, a developmental disorder caused by deletion of multiple genes at 7q11.23. [provided by RefSeq, Jul 2008],disease:Haploinsufficiency of TBL2 may be the cause of certain cardiovascular and musculo-skeletal abnormalities observed in Williams-Beuren syndrome (WBS) [MIM:194050]. WBS is a rare developmental disorder. It is a contiguous gene deletion syndrome involving genes from chromosome band 7q11.23.,PTM:Phosphorylated upon DNA damage, probably by ATM or ATR.,similarity:Contains 7 WD repeats.,

Research Area

Neuroscience; Cell Type Marker; Neuron marker; Soma marker; Neurology process; Neural Signal Transduction; Neurogenesis; Stem Cells; Germline Stem Cells; Embryonic Germ Cells; Neural Stem Cells; Intracellular; Developmental Biology; Reproduction; Germ cell markers; Lineage specification; Trophectoderm

Image Data



Western blot analysis of lysates from MCF-7 cells, using TBL2 Antibody. The lane on the right is blocked with the synthesized peptide.