

---

**Product Name: TAUT Rabbit Polyclonal Antibody****Catalog #: APRab18660**

For research use only.

**Summary**

<b>Description</b>	Rabbit polyclonal Antibody
<b>Host</b>	Rabbit
<b>Application</b>	WB,IHC,ELISA
<b>Reactivity</b>	Human,Mouse,Rat
<b>Conjugation</b>	Unconjugated
<b>Modification</b>	Unmodified
<b>Isotype</b>	IgG
<b>Clonality</b>	Polyclonal
<b>Form</b>	Liquid
<b>Concentration</b>	1mg/ml
<b>Storage</b>	Aliquot and store at -20°C (valid for 12 months). Avoid freeze/thaw cycles.
<b>Shipping</b>	Ice bags
<b>Buffer</b>	Liquid in PBS containing 50% glycerol, 0.5% protective protein and 0.02% New type preservative N
<b>Purification</b>	Affinity purification

**Application**

<b>Dilution Ratio</b>	WB 1:500-1:2000,IHC 1:100-1:300,ELISA 1:20000-1:40000
<b>Molecular Weight</b>	Calculated MW: 70 kDa;

**Antigen Information**

<b>Gene Name</b>	SLC6A6
<b>Alternative Names</b>	SLC6A6; Sodium- and chloride-dependent taurine transporter; Solute carrier family 6 member 6
<b>Gene ID</b>	6533.0
<b>SwissProt ID</b>	P31641
<b>Immunogen</b>	

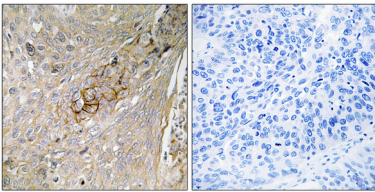
**Background**

This gene encodes a multi-pass membrane protein that is a member of a family of sodium and chloride-ion

dependent transporters. The encoded protein transports taurine and beta-alanine. There is a pseudogene for this gene on chromosome 21. Alternative splicing results in multiple transcript variants. [provided by RefSeq, May 2013],

## Research Area

## Image Data



Immunohistochemistry analysis of paraffin-embedded human lung carcinoma tissue, using SLC6A6 Antibody. The picture on the right is blocked with the synthesized peptide.