
Product Name: TA2R4 Rabbit Polyclonal Antibody**Catalog #: APRab18585**

For research use only.

Summary

Description	Rabbit polyclonal Antibody
Host	Rabbit
Application	WB,ELISA
Reactivity	Human,Rat,Mouse
Conjugation	Unconjugated
Modification	Unmodified
Isotype	IgG
Clonality	Polyclonal
Form	Liquid
Concentration	1mg/ml
Storage	Aliquot and store at -20°C (valid for 12 months). Avoid freeze/thaw cycles.
Shipping	Ice bags
Buffer	Liquid in PBS containing 50% glycerol, and 0.02% New type preservative N.
Purification	Affinity purification

Application

Dilution Ratio	WB 1:500-1:2000,ELISA 1:5000-1:20000
Molecular Weight	32kDa

Antigen Information

Gene Name	TAS2R4
Alternative Names	
Gene ID	50832.0
SwissProt ID	Q9NYW5
Immunogen	Synthesized peptide derived from human protein . at AA range: 10-90

Background

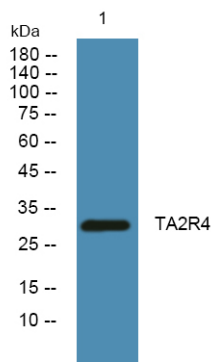
This gene encodes a member of a family of candidate taste receptors that are members of the G protein-coupled receptor superfamily and that are specifically expressed by taste receptor cells of the tongue and palate epithelia. These apparently intronless genes encode a 7-transmembrane receptor protein, functioning as a bitter taste receptor. This gene is clustered with

another 3 candidate taste receptor genes in chromosome 7 and is genetically linked to loci that influence bitter perception. [provided by RefSeq, Jul 2008],function:Gustducin-coupled receptor for denatonium and N(6)-propyl-2-thiouracil implicated in the perception of bitter compounds in the oral cavity and the gastrointestinal tract. Signals through PLCB2 and the calcium-regulated cation channel TRPM5.,miscellaneous:Several bitter taste receptors are expressed in a single taste receptor cell.,similarity:Belongs to the G-protein coupled receptor T2R family.,tissue specificity:Expressed in subsets of taste receptor cells of the tongue and palate epithelium and exclusively in gustducin-positive cells.,

Research Area

Taste transduction;

Image Data



Western blot analysis of lysates from SW480 cells, TA2R4 Rabbit Polyclonal Antibody was diluted at 1:1000, 4° over night