

**Product Name: T2R48 Rabbit Polyclonal Antibody****Catalog #: APRab18573**

For research use only.

**Summary**

<b>Description</b>	Rabbit polyclonal Antibody
<b>Host</b>	Rabbit
<b>Application</b>	WB,ELISA
<b>Reactivity</b>	Human,Rat,Mouse
<b>Conjugation</b>	Unconjugated
<b>Modification</b>	Unmodified
<b>Isotype</b>	IgG
<b>Clonality</b>	Polyclonal
<b>Form</b>	Liquid
<b>Concentration</b>	1mg/ml
<b>Storage</b>	Aliquot and store at -20°C (valid for 12 months). Avoid freeze/thaw cycles.
<b>Shipping</b>	Ice bags
<b>Buffer</b>	Liquid in PBS containing 50% glycerol, 0.5% protective protein and 0.02% New type preservative N.
<b>Purification</b>	Affinity purification

**Application**

**Dilution Ratio** WB 1:500-1:2000,ELISA 1:10000-1:20000

**Molecular Weight**

**Antigen Information**

<b>Gene Name</b>	TAS2R19
<b>Alternative Names</b>	TAS2R19; TAS2R23; TAS2R48; Taste receptor type 2 member 19; Taste receptor type 2 member 23; Taste receptor type 2 member 48; T2R48
<b>Gene ID</b>	259294.0
<b>SwissProt ID</b>	P59542
<b>Immunogen</b>	The antiserum was produced against synthesized peptide derived from human TAS2R48. AA range:90-139

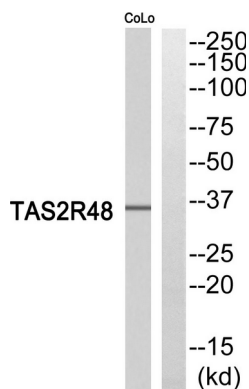
**Background**

function: Receptor that may play a role in the perception of bitterness and is gustducin-linked. May play a role in sensing the chemical composition of the gastrointestinal content. The activity of this receptor may stimulate alpha gustducin, mediate PLC-beta-2 activation and lead to the gating of TRPM5., miscellaneous: Most taste cells may be activated by a limited number of bitter compounds; individual taste cells can discriminate among bitter stimuli., similarity: Belongs to the G-protein coupled receptor T2R family., tissue specificity: Expressed in subsets of taste receptor cells of the tongue and exclusively in gustducin-positive cells., function: Receptor that may play a role in the perception of bitterness and is gustducin-linked. May play a role in sensing the chemical composition of the gastrointestinal content. The activity of this receptor may stimulate alpha gustducin, mediate PLC-beta-2 activation and lead to the gating of TRPM5., miscellaneous: Most taste cells may be activated by a limited number of bitter compounds; individual taste cells can discriminate among bitter stimuli., similarity: Belongs to the G-protein coupled receptor T2R family., tissue specificity: Expressed in subsets of taste receptor cells of the tongue and exclusively in gustducin-positive cells.,

## Research Area

Taste transduction;

## Image Data



Western blot analysis of TAS2R48 Antibody. The lane on the right is blocked with the TAS2R48 peptide.