
Product Name: T2R43 Rabbit Polyclonal Antibody**Catalog #: APRab18570**

For research use only.

Summary

Description	Rabbit polyclonal Antibody
Host	Rabbit
Application	WB,ELISA
Reactivity	Human,Rat,Mouse
Conjugation	Unconjugated
Modification	Unmodified
Isotype	IgG
Clonality	Polyclonal
Form	Liquid
Concentration	1mg/ml
Storage	Aliquot and store at -20°C (valid for 12 months). Avoid freeze/thaw cycles.
Shipping	Ice bags
Buffer	Liquid in PBS containing 50% glycerol, 0.5% protective protein and 0.02% New type preservative N.
Purification	Affinity purification

Application

Dilution Ratio	WB 1:500-1:2000,ELISA 1:10000-1:20000
Molecular Weight	35kDa

Antigen Information

Gene Name	TAS2R43
Alternative Names	TAS2R43; Taste receptor type 2 member 43; T2R43; Taste receptor type 2 member 52; T2R52
Gene ID	259289.0
SwissProt ID	P59537
Immunogen	The antiserum was produced against synthesized peptide derived from human TAS2R43. AA range:124-173

Background

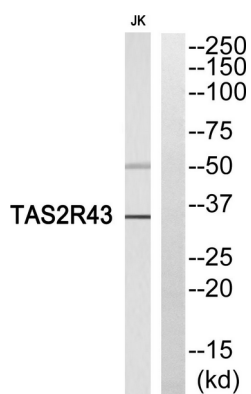
TAS2R43 belongs to the large TAS2R receptor family. TAS2Rs are expressed on the surface of taste receptor cells and mediate

the perception of bitterness through a G protein-coupled second messenger pathway (Conte et al., 2002 [PubMed 12584440]). For further information on TAS2Rs, see MIM 604791.[supplied by OMIM, Mar 2009],function:Receptor that may play a role in the perception of bitterness and is gustducin-linked. May play a role in sensing the chemical composition of the gastrointestinal content. The activity of this receptor may stimulate alpha gustducin, mediate PLC-beta-2 activation and lead to the gating of TRPM5 (By similarity). Activated by the sulfonyl amide sweeteners saccharin and acesulfame K.,miscellaneous:Most taste cells may be activated by a limited number of bitter compounds; individual taste cells can discriminate among bitter stimuli.,similarity:Belongs to the G-protein coupled receptor T2R family.,tissue specificity:Expressed in subsets of taste receptor cells of the tongue and exclusively in gustducin-positive cells.,

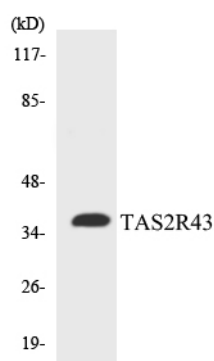
Research Area

Taste transduction;

Image Data



Western blot analysis of TAS2R43 Antibody. The lane on the right is blocked with the TAS2R43 peptide.



Western blot analysis of the lysates from COLO205 cells using TAS2R43 antibody.