
Product Name: T2R16 Rabbit Polyclonal Antibody**Catalog #: APRab18561**

For research use only.

Summary

Description	Rabbit polyclonal Antibody
Host	Rabbit
Application	WB,ICC/IF,ELISA
Reactivity	Human,Rat,Mouse
Conjugation	Unconjugated
Modification	Unmodified
Isotype	IgG
Clonality	Polyclonal
Form	Liquid
Concentration	1mg/ml
Storage	Aliquot and store at -20°C (valid for 12 months). Avoid freeze/thaw cycles.
Shipping	Ice bags
Buffer	Liquid in PBS containing 50% glycerol, 0.5% protective protein and 0.02% New type preservative N.
Purification	Affinity purification

Application

Dilution Ratio	WB 1:500-1:2000,ICC/IF 1:200-1:1000,ELISA 1:10000-1:20000
Molecular Weight	34kDa

Antigen Information

Gene Name	TAS2R16
Alternative Names	TAS2R16; Taste receptor type 2 member 16; T2R16
Gene ID	50833.0
SwissProt ID	Q9NYV7
Immunogen	The antiserum was produced against synthesized peptide derived from human TAS2R16. AA range:136-185

Background

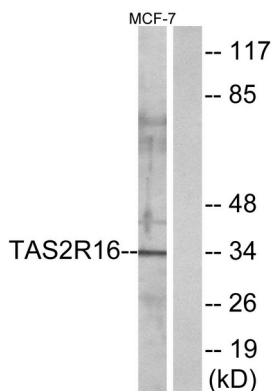
This gene encodes a member of a family of candidate taste receptors that are members of the G protein-coupled receptor

superfamily. These family members are specifically expressed by taste receptor cells of the tongue and palate epithelia. Each of these apparently intronless genes encodes a 7-transmembrane receptor protein, functioning as a bitter taste receptor. This gene is clustered with another 3 candidate taste receptor genes in chromosome 7 and is genetically linked to loci that influence bitter perception. [provided by RefSeq, Jul 2008],function:Gustducin-coupled receptor implicated in the perception of bitter compounds in the oral cavity and the gastrointestinal tract. Signals through PLCB2 and the calcium-regulated cation channel TRPM5.,miscellaneous:Confers bitter perception of salicin to non-taster mice.,miscellaneous:Several bitter taste receptors are expressed in a single taste receptor cell.,polymorphism:The Lys-172 polymorphism in TAS2R16 is associated with genetic susceptibility to alcoholism [MIM:103780],similarity:Belongs to the G-protein coupled receptor T2R family.,tissue specificity:Expressed in a subset of gustducin-positive taste receptor cells of the tongue,

Research Area

Taste transduction;

Image Data



Western blot analysis of lysates from MCF-7 cells, using TAS2R16 Antibody. The lane on the right is blocked with the synthesized peptide.