

**Product Name: T2R10 Rabbit Polyclonal Antibody**  
**Catalog #: APRab18558**



## Summary

<b>Production Name</b>	T2R10 Rabbit Polyclonal Antibody
<b>Description</b>	Rabbit Polyclonal Antibody
<b>Host</b>	Rabbit
<b>Application</b>	WB,ELISA,IHC-P
<b>Reactivity</b>	Human,Rat,Mouse

## Performance

<b>Conjugation</b>	Unconjugated
<b>Modification</b>	Unmodified
<b>Isotype</b>	IgG
<b>Clonality</b>	Polyclonal
<b>Form</b>	Liquid
<b>Storage</b>	Store at 4°C short term. Aliquot and store at -20°C long term. Avoid freeze/thaw cycles.
<b>Buffer</b>	Liquid in PBS containing 50% glycerol, 0.5% protective protein and 0.02% New type preservative N.
<b>Purification</b>	Affinity purification

## Immunogen

<b>Gene Name</b>	TAS2R10
<b>Alternative Names</b>	TAS2R10; Taste receptor type 2 member 10; T2R10; Taste receptor family B member 2; TRB2
<b>Gene ID</b>	50839.0
<b>SwissProt ID</b>	Q9NYW0.The antiserum was produced against synthesized peptide derived from human TAS2R10. AA range:122-171

## Application

<b>Dilution Ratio</b>	WB 1:500-2000, IHC-P 1:50-300, ELISA 2000-20000
<b>Molecular Weight</b>	35kDa

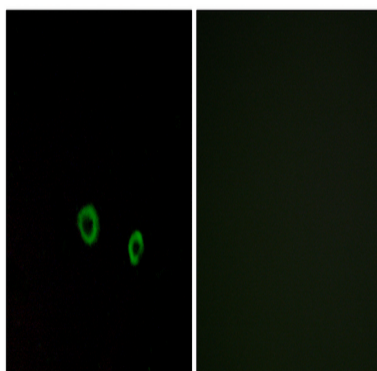
## Background

This gene product belongs to the family of candidate taste receptors that are members of the G-protein-coupled receptor superfamily. These proteins are specifically expressed in the taste receptor cells of the tongue and palate epithelia. They are organized in the genome in clusters and are genetically linked to loci that influence bitter perception in mice and humans. In functional expression studies, they respond to bitter tastants. This gene maps to the taste receptor gene cluster on chromosome 12p13. [provided by RefSeq, Jul 2008],function:Gustducin-coupled strychnine receptor implicated in the perception of bitter compounds in the oral cavity and the gastrointestinal tract. Signals through PLCB2 and the calcium-regulated cation channel TRPM5.,miscellaneous:Several bitter taste receptors are expressed in a single taste receptor cell.,similarity:Belongs to the G-protein coupled receptor T2R family.,tissue specificity:Expressed in subsets of taste receptor cells of the tongue and palate epithelium and exclusively in gustducin-positive cells.,

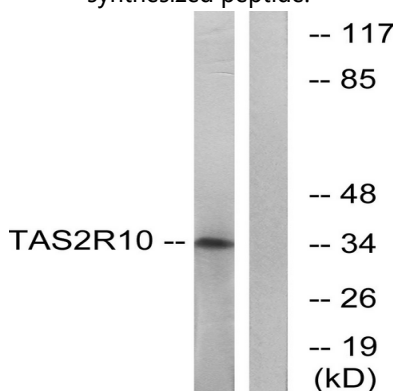
## Research Area

Taste transduction;

## Image Data



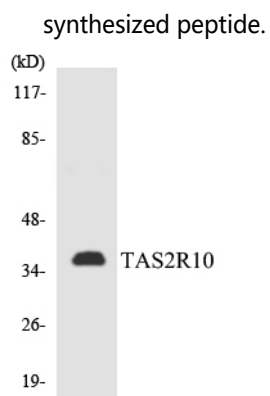
Immunofluorescence analysis of MCF7 cells, using TAS2R10 Antibody. The picture on the right is blocked with the synthesized peptide.



Western blot analysis of lysates from LOVO cells, using TAS2R10 Antibody. The lane on the right is blocked with the

**Product Name: T2R10 Rabbit Polyclonal Antibody**  
**Catalog #: APRab18558**

---



Western blot analysis of the lysates from HepG2 cells using TAS2R10 antibody.

### **Note**

For research use only.