

Product Name: Synuclein- γ Rabbit Polyclonal Antibody**Catalog #: APRab18519**

For research use only.

Summary

Description	Rabbit polyclonal Antibody
Host	Rabbit
Application	WB,IHC,ICC/IF,ELISA
Reactivity	Human,Rat,Mouse
Conjugation	Unconjugated
Modification	Unmodified
Isotype	IgG
Clonality	Polyclonal
Form	Liquid
Concentration	1mg/ml
Storage	Aliquot and store at -20°C (valid for 12 months). Avoid freeze/thaw cycles.
Shipping	Ice bags
Buffer	Liquid in PBS containing 50% glycerol, 0.5% protective protein and 0.02% New type preservative N.
Purification	Affinity purification

Application

Dilution Ratio	WB 1:500-1:2000,IHC 1:100-1:300,ICC/IF 1:50-1:200,ELISA 1:5000-1:20000
Molecular Weight	20kDa

Antigen Information

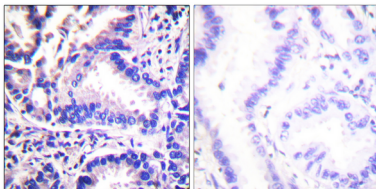
Gene Name	SNCG
Alternative Names	SNCG; BCSG1; PERSYN; PRSN; Gamma-synuclein; Breast cancer-specific gene 1 protein; Persyn; Synoretin; SR
Gene ID	6623.0
SwissProt ID	O76070
Immunogen	The antiserum was produced against synthesized peptide derived from human Synuclein gamma. AA range:78-127

Background

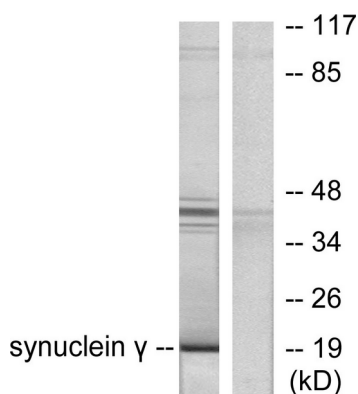
This gene encodes a member of the synuclein family of proteins which are believed to be involved in the pathogenesis of neurodegenerative diseases. Mutations in this gene have also been associated with breast tumor development. [provided by RefSeq, Jan 2010],disease:Brain iron accumulation type 1 (NBIA1, also called Hallervorden-Spatz syndrome), a rare neuroaxonal dystrophy, is histologically characterized by axonal spheroids, iron deposition, Lewy body (LB)-like intraneuronal inclusions, glial inclusions and neurofibrillary tangles. SNCG is found in spheroids but not in inclusions.,function:Plays a role in neurofilament network integrity. May be involved in modulating axonal architecture during development and in the adult. In vitro, increases the susceptibility of neurofilament-H to calcium-dependent proteases (By similarity). May also function in modulating the keratin network in skin. Activates the MAPK and Elk-1 signal transduction pathway.,PTM:Phosphorylated. Phosphorylation by GRK5 appears to occur on residues distinct from the residue phosphorylated by other kinases.,similarity:Belongs to the synuclein family.,subcellular location:Associated with centrosomes in several interphase cells. In mitotic cells, localized to the poles of the spindle.,subunit:May be a centrosome-associated protein.,tissue specificity:Highly expressed in brain, particularly in the substantia nigra. Also expressed in the corpus callosum, heart, skeletal muscle, ovary, testis, colon and spleen. Weak expression in pancreas, kidney and lung.,

Research Area

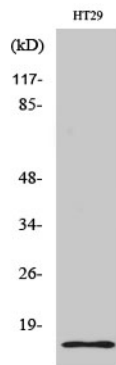
Image Data



Immunohistochemistry analysis of paraffin-embedded human lung carcinoma tissue, using Synuclein gamma Antibody. The picture on the right is blocked with the synthesized peptide.



Western blot analysis of lysates from HT29 cells, using Synuclein gamma Antibody. The lane on the right is blocked with the synthesized peptide.



Western Blot analysis of various cells using Synuclein- γ Polyclonal Antibody