

Product Name: SYNE2 Rabbit Polyclonal Antibody**Catalog #: APRab18505**

For research use only.

Summary

Description	Rabbit polyclonal Antibody
Host	Rabbit
Application	IHC, ICC/IF
Reactivity	Human, Mouse
Conjugation	Unconjugated
Modification	Unmodified
Isotype	IgG
Clonality	Polyclonal
Form	Liquid
Concentration	1mg/ml
Storage	Aliquot and store at -20°C (valid for 12 months). Avoid freeze/thaw cycles.
Shipping	Ice bags
Buffer	Liquid in PBS containing 50% glycerol, and 0.02% New type preservative N.
Purification	Affinity purification

Application

Dilution Ratio	IHC 1:50-1:300, ICC/IF 1:50-1:200
Molecular Weight	757kDa

Antigen Information

Gene Name	SYNE2
Alternative Names	KIAA1011 NUA
Gene ID	23224.0
SwissProt ID	Q8WXH0
Immunogen	Synthesized peptide derived from human protein . at AA range: 360-440

Background

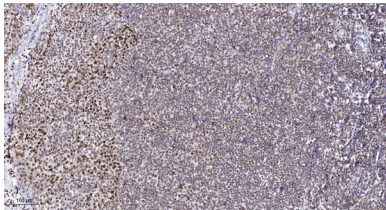
The protein encoded by this gene is a nuclear outer membrane protein that binds cytoplasmic F-actin. This binding tethers the nucleus to the cytoskeleton and aids in the maintenance of the structural integrity of the nucleus. Several transcript variants encoding different isoforms have been found for this gene. [provided by RefSeq, Mar 2009], domain: The Klarsicht domain

mediates the nuclear envelope targeting.,function:Involved in the maintenance of nuclear organization and structural integrity. Probable anchoring protein which theters the nucleus to the cytoskeleton. Connects nuclei to the cytoskeleton by interacting with the nuclear envelope and with F-actin in the cytoplasm.,similarity:Belongs to the nesprin family.,similarity:Contains 1 actin-binding domain.,similarity:Contains 1 KASH domain.,similarity:Contains 13 LRR (leucine-rich) repeats.,similarity:Contains 2 CH (calponin-homology) domains.,similarity:Contains 9 spectrin repeats.,subcellular location:The largest part of the protein is cytoplasmic, while its C-terminal part is associated with the nuclear envelope, most probably the outer nuclear membrane. Remains associated with the nuclear envelope during its breakdown in mitotic cells.,subunit:Interacts with F-actin via its N-terminal domain.,tissue specificity:Widely expressed, with higher level in kidney, adult and fetal liver, stomach and placenta. Weakly expressed in skeletal muscle and brain. Isoform 5 is highly expressed in pancreas, skeletal muscle and heart.,

Research Area

Tags & Cell Markers; Subcellular Markers; Nucleus; Nuclear Envelope; Signal Transduction; Cytoskeleton / ECM; Cytoskeleton; Microfilaments; Actin etc; Actin Binding Proteins; Neuroscience; Processes

Image Data



Immunohistochemical analysis of paraffin-embedded human tonsil. 1, Antibody was diluted at 1:200 (4° overnight) . 2, Tris-EDTA,pH9.0 was used for antigen retrieval. 3,Secondary antibody was diluted at 1:200 (room temperature, 45min) .