
Product Name: Syndecan-4 Rabbit Polyclonal Antibody**Catalog #: APRab18504**

For research use only.

Summary

Description	Rabbit polyclonal Antibody
Host	Rabbit
Application	WB,IHC,ICC/IF,ELISA
Reactivity	Human,Mouse,Rat
Conjugation	Unconjugated
Modification	Unmodified
Isotype	IgG
Clonality	Polyclonal
Form	Liquid
Concentration	1mg/ml
Storage	Aliquot and store at -20°C (valid for 12 months). Avoid freeze/thaw cycles.
Shipping	Ice bags
Buffer	Liquid in PBS containing 50% glycerol, 0.5% protective protein and 0.02% New type preservative N.
Purification	Affinity purification

Application

Dilution Ratio	WB 1:500-1:2000,IHC 1:100-1:300,ICC/IF 1:200-1:1000,ELISA 1:20000-1:40000
Molecular Weight	22kDa

Antigen Information

Gene Name	SDC4
Alternative Names	SDC4; Syndecan-4; SYND4; Amphiglycan; Ryudocan core protein
Gene ID	6385.0
SwissProt ID	P31431
Immunogen	The antiserum was produced against synthesized peptide derived from human Syndecan4. AA range:145-194

Background

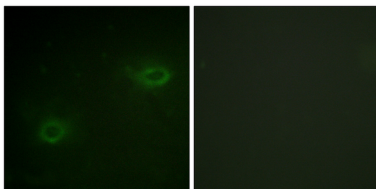
The protein encoded by this gene is a transmembrane (type I) heparan sulfate proteoglycan that functions as a receptor in

intracellular signaling. The encoded protein is found as a homodimer and is a member of the syndecan proteoglycan family. This gene is found on chromosome 20, while a pseudogene has been found on chromosome 22. [provided by RefSeq, Jul 2008],function:Cell surface proteoglycan that bears heparan sulfate.,function:Cell surface proteoglycan.,similarity:Belongs to the syndecan proteoglycan family.,subunit:Homodimer. Interacts with CDCP1, with GIPC PDZ domain and with NUDT16L1/SDOS (By similarity). Interacts with SDCBP.,tissue specificity:Expressed in epithelial and fibroblastic cells.,

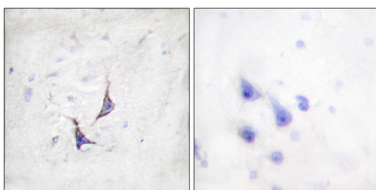
Research Area

ECM-receptor interaction;Cell adhesion molecules (CAMs);

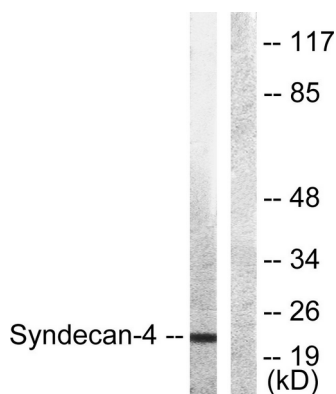
Image Data



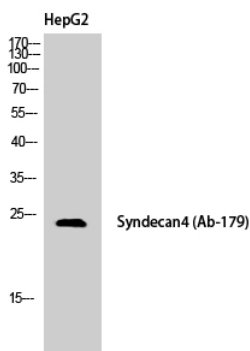
Immunofluorescence analysis of HeLa cells, using Syndecan4 Antibody. The picture on the right is blocked with the synthesized peptide.



Immunohistochemistry analysis of paraffin-embedded human brain tissue, using Syndecan4 Antibody. The picture on the right is blocked with the synthesized peptide.



Western blot analysis of lysates from HepG2 cells, using Syndecan4 Antibody. The lane on the right is blocked with the synthesized peptide.



Western Blot analysis of HepG2 cells using Syndecan-4 Polyclonal Antibody

