

**Product Name: Synaptotagmin X Rabbit Polyclonal Antibody****Catalog #: APRab18497**

For research use only.

**Summary**

<b>Description</b>	Rabbit polyclonal Antibody
<b>Host</b>	Rabbit
<b>Application</b>	WB,IHC
<b>Reactivity</b>	Human,Mouse,Rat
<b>Conjugation</b>	Unconjugated
<b>Modification</b>	Unmodified
<b>Isotype</b>	IgG
<b>Clonality</b>	Polyclonal
<b>Form</b>	Liquid
<b>Concentration</b>	1mg/ml
<b>Storage</b>	Aliquot and store at -20°C (valid for 12 months). Avoid freeze/thaw cycles.
<b>Shipping</b>	Ice bags
<b>Buffer</b>	Liquid in PBS containing 50% glycerol, 0.5% protective protein and 0.02% New type preservative N.
<b>Purification</b>	Affinity purification

**Application**

<b>Dilution Ratio</b>	WB 1:500-1:2000,IHC 1:50-1:300
<b>Molecular Weight</b>	55kDa

**Antigen Information**

<b>Gene Name</b>	SYT10
<b>Alternative Names</b>	SYT10; Synaptotagmin-10; Synaptotagmin X; SytX
<b>Gene ID</b>	341359.0
<b>SwissProt ID</b>	Q6XYQ8
<b>Immunogen</b>	Synthesized peptide derived from Synaptotagmin X . at AA range: 380-460

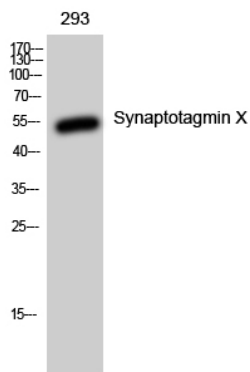
**Background**

cofactor: Binds 3 calcium ions per subunit. The ions are bound to the C2 domains.,function: May be involved in Ca(2+)-dependent exocytosis of secretory vesicles through Ca(2+) and phospholipid binding to the C2 domain or may serve as Ca(2+)

sensors in the process of vesicular trafficking and exocytosis.,similarity:Belongs to the synaptotagmin family.,similarity:Contains 2 C2 domains.,subunit:Homodimer. Can also form heterodimers.,tissue specificity:Expressed only in pancreas, lung and kidney.,cofactor:Binds 3 calcium ions per subunit. The ions are bound to the C2 domains.,function:May be involved in  $\text{Ca}^{2+}$ -dependent exocytosis of secretory vesicles through  $\text{Ca}^{2+}$  and phospholipid binding to the C2 domain or may serve as  $\text{Ca}^{2+}$  sensors in the process of vesicular trafficking and exocytosis.,similarity:Belongs to the synaptotagmin family.,similarity:Contains 2 C2 domains.,subunit:Homodimer. Can also form heterodimers.,tissue specificity:Expressed only in pancreas, lung and kidney.,

## Research Area

## Image Data



Western Blot analysis of 293 cells using Synaptotagmin X Polyclonal Antibody