
Product Name: Synaptotagmin Rabbit Polyclonal Antibody**Catalog #: APRab18496**

For research use only.

Summary

Description	Rabbit polyclonal Antibody
Host	Rabbit
Application	WB,IHC,ICC/IF,ELISA
Reactivity	Human,Mouse,Rat
Conjugation	Unconjugated
Modification	Unmodified
Isotype	IgG
Clonality	Polyclonal
Form	Liquid
Concentration	1mg/ml
Storage	Aliquot and store at -20°C (valid for 12 months). Avoid freeze/thaw cycles.
Shipping	Ice bags
Buffer	Liquid in PBS containing 50% glycerol, 0.5% protective protein and 0.02% New type preservative N.
Purification	Affinity purification

Application

Dilution Ratio	WB 1:500-1:2000,IHC 1:100-1:300,ICC/IF 1:50-1:200,ELISA 1:5000-1:10000
Molecular Weight	60kDa

Antigen Information

Gene Name	SYT1/SYT2
Alternative Names	SYT1; SVP65; SYT; Synaptotagmin-1; Synaptotagmin I; SytI; p65; SYT2; Synaptotagmin-2; Synaptotagmin II; SytII
Gene ID	6857/127833
SwissProt ID	P21579/Q8N9I0
Immunogen	The antiserum was produced against synthesized peptide derived from human Synaptotagmin. AA range:176-225

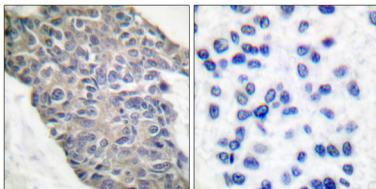
Background

The synaptotagmins are integral membrane proteins of synaptic vesicles thought to serve as Ca(2+) sensors in the process of vesicular trafficking and exocytosis. Calcium binding to synaptotagmin-1 participates in triggering neurotransmitter release at the synapse (Fernandez-Chacon et al., 2001 [PubMed 11242035]).[supplied by OMIM, Jul 2010],cofactor: Binds 3 calcium ions per subunit. The ions are bound to the C2 domains.,domain: The first C2 domain mediates Ca(2+)-dependent phospholipid binding.,domain: The second C2 domain mediates interaction with SV2A and STN2.,function: May have a regulatory role in the membrane interactions during trafficking of synaptic vesicles at the active zone of the synapse. It binds acidic phospholipids with a specificity that requires the presence of both an acidic head group and a diacyl backbone. A Ca(2+)-dependent interaction between synaptotagmin and putative receptors for activated protein kinase C has also been reported. It can bind to at least three additional proteins in a Ca(2+)-independent manner; these are neurexins, syntaxin and AP2.,similarity: Belongs to the synaptotagmin family.,similarity: Contains 2 C2 domains.,subcellular location: Synaptic vesicles and chromaffin granules.,subunit: Homotetramer (Probable). Interacts with SCAMP5, STN2, SV2A, SV2B, SV2C and RIMS1. Forms a complex with SV2B, syntaxin 1 and SNAP25.,

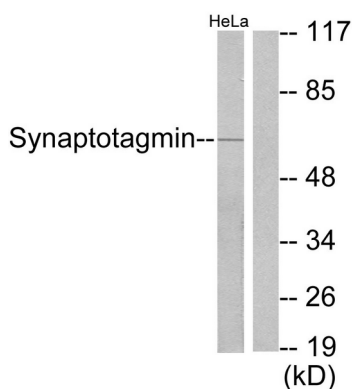
Research Area

Neuroscience; Neurotransmission; Secretory Vesicles; Munc18; Cell Adhesion Proteins; ECM Proteins; Cell Type Marker; Neuron marker; Synapse marker; Cancer; Cancer Metabolism; Metabolic signaling pathway; Integration of energy metabolism; Metabolism; Pathways and Processes; Metabolic signaling pathways; Energy transfer pathways; Integration of energy; Types of disease; Cancer

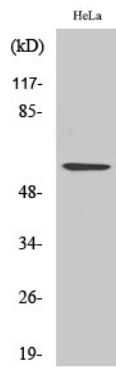
Image Data



Immunohistochemistry analysis of paraffin-embedded human breast carcinoma tissue, using Synaptotagmin Antibody. The picture on the right is blocked with the synthesized peptide.



Western blot analysis of lysates from HeLa cells, using Synaptotagmin Antibody. The lane on the right is blocked with the synthesized peptide.



Western Blot analysis of various cells using Synaptotagmin Polyclonal Antibody