
Product Name: Synapsin I Rabbit Polyclonal Antibody**Catalog #: APRab18490**

For research use only.

Summary

Description	Rabbit polyclonal Antibody
Host	Rabbit
Application	WB,IHC,ICC/IF,ELISA
Reactivity	Human,Mouse,Rat
Conjugation	Unconjugated
Modification	Unmodified
Isotype	IgG
Clonality	Polyclonal
Form	Liquid
Concentration	1mg/ml
Storage	Aliquot and store at -20°C (valid for 12 months). Avoid freeze/thaw cycles.
Shipping	Ice bags
Buffer	Liquid in PBS containing 50% glycerol, 0.5% protective protein and 0.02% New type preservative N.
Purification	Affinity purification

Application

Dilution Ratio	WB 1:500-1:2000,IHC 1:100-1:300,ICC/IF 1:200-1:1000,ELISA 1:10000-1:20000
Molecular Weight	74kDa

Antigen Information

Gene Name	SYN1
Alternative Names	SYN1; Synapsin-1; Brain protein 4.1; Synapsin I
Gene ID	6853.0
SwissProt ID	P17600
Immunogen	The antiserum was produced against synthesized peptide derived from human Synapsin. AA range:3-52

Background

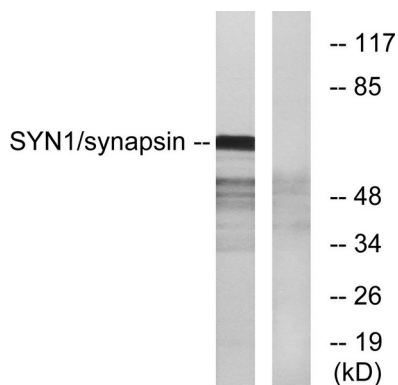
This gene is a member of the synapsin gene family. Synapsins encode neuronal phosphoproteins which associate with the

cytoplasmic surface of synaptic vesicles. Family members are characterized by common protein domains, and they are implicated in synaptogenesis and the modulation of neurotransmitter release, suggesting a potential role in several neuropsychiatric diseases. This member of the synapsin family plays a role in regulation of axonogenesis and synaptogenesis. The protein encoded serves as a substrate for several different protein kinases and phosphorylation may function in the regulation of this protein in the nerve terminal. Mutations in this gene may be associated with X-linked disorders with primary neuronal degeneration such as Rett syndrome. Alternatively spliced transcript variants encoding different isoforms have been identified. [provided by RefSeq, Jul 2008],disease:Defects in SYN1 are a cause of epilepsy X-linked with variable learning disabilities and behavior disorders [MIM:300491]. XELBD is characterized by variable combinations of epilepsy, learning difficulties, macrocephaly, and aggressive behavior.,function:Neuronal phosphoprotein that coats synaptic vesicles, binds to the cytoskeleton, and is believed to function in the regulation of neurotransmitter release. The complex formed with NOS1 and CAPON proteins is necessary for specific nitric-oxid functions at a presynaptic level.,PTM:Substrate of at least four different protein kinases. It is probable that phosphorylation plays a role in the regulation of synapsin-1 in the nerve terminal. Phosphorylated upon DNA damage, probably by ATM or ATR.,similarity:Belongs to the synapsin family.,subunit:Homodimer. Interacts with CAPON. Forms a ternary complex with NOS1. Isoform 1b interacts with PRNP.,

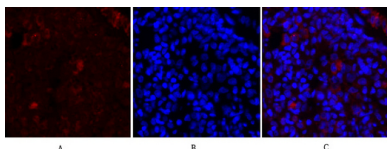
Research Area

Neuroscience

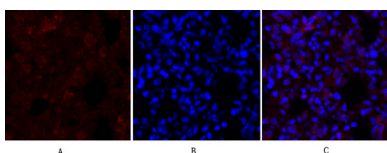
Image Data



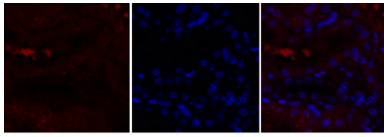
Western blot analysis of lysates from 293 cells, treated with PMA 200nM 30', using Synapsin Antibody. The lane on the right is blocked with the synthesized peptide.



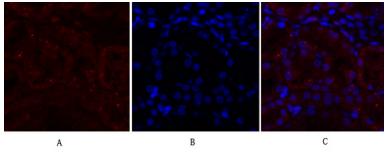
Immunofluorescence analysis of rat-lung tissue. 1, Synapsin I Polyclonal Antibody (red) was diluted at 1:200 (4°C, overnight). 2, Cy3 labeled Secondary antibody was diluted at 1:300 (room temperature, 50min). 3, Picture B: DAPI (blue) 10min. Picture A: Target. Picture B: DAPI. Picture C: merge of A+B



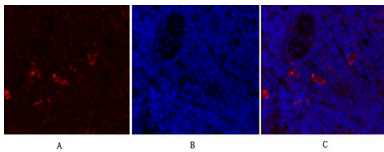
Immunofluorescence analysis of rat-lung tissue. 1, Synapsin I Polyclonal Antibody (red) was diluted at 1:200 (4°C, overnight). 2, Cy3 labeled Secondary antibody was diluted at 1:300 (room temperature, 50min). 3, Picture B: DAPI (blue) 10min. Picture A: Target. Picture B: DAPI. Picture C: merge of A+B



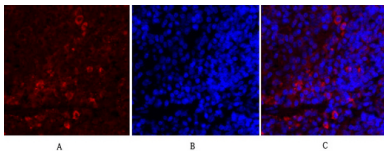
Immunofluorescence analysis of rat-kidney tissue. 1, Synapsin I Polyclonal Antibody (red) was diluted at 1:200 (4°C, overnight) . 2, Cy3 labeled Secondary antibody was diluted at 1:300 (room temperature, 50min) . 3, Picture B: DAPI (blue) 10min. Picture A: Target. Picture B: DAPI. Picture C: merge of A+B



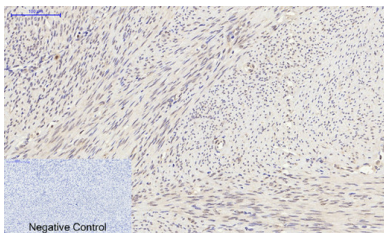
Immunofluorescence analysis of rat-kidney tissue. 1, Synapsin I Polyclonal Antibody (red) was diluted at 1:200 (4°C, overnight) . 2, Cy3 labeled Secondary antibody was diluted at 1:300 (room temperature, 50min) . 3, Picture B: DAPI (blue) 10min. Picture A: Target. Picture B: DAPI. Picture C: merge of A+B



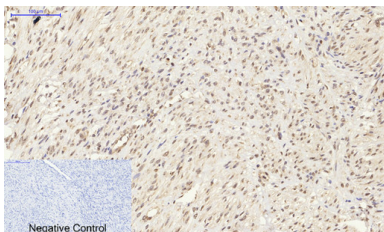
Immunofluorescence analysis of rat-spleen tissue. 1, Synapsin I Polyclonal Antibody (red) was diluted at 1:200 (4°C, overnight) . 2, Cy3 labeled Secondary antibody was diluted at 1:300 (room temperature, 50min) . 3, Picture B: DAPI (blue) 10min. Picture A: Target. Picture B: DAPI. Picture C: merge of A+B



Immunofluorescence analysis of rat-spleen tissue. 1, Synapsin I Polyclonal Antibody (red) was diluted at 1:200 (4°C, overnight) . 2, Cy3 labeled Secondary antibody was diluted at 1:300 (room temperature, 50min) . 3, Picture B: DAPI (blue) 10min. Picture A: Target. Picture B: DAPI. Picture C: merge of A+B



Immunohistochemical analysis of paraffin-embedded Human-uterus tissue. 1, Synapsin I Polyclonal Antibody was diluted at 1:200 (4°C, overnight) . 2, Sodium citrate pH 6.0 was used for antibody retrieval (>98°C, 20min) . 3, Secondary antibody was diluted at 1:200 (room temperature, 30min) . Negative control was used by secondary antibody only.



Immunohistochemical analysis of paraffin-embedded Human-uterus-cancer tissue. 1, Synapsin I Polyclonal Antibody was diluted at 1:200 (4°C, overnight) . 2, Sodium citrate pH 6.0 was used for antibody retrieval (>98°C, 20min) . 3, Secondary antibody was diluted at 1:200 (room temperature, 30min) . Negative control was used by secondary antibody only.