
Product Name: SUDD Rabbit Polyclonal Antibody**Catalog #: APRab18430**

For research use only.

Summary

Description	Rabbit polyclonal Antibody
Host	Rabbit
Application	WB,IHC,ELISA
Reactivity	Human,Mouse
Conjugation	Unconjugated
Modification	Unmodified
Isotype	IgG
Clonality	Polyclonal
Form	Liquid
Concentration	1mg/ml
Storage	Aliquot and store at -20°C (valid for 12 months). Avoid freeze/thaw cycles.
Shipping	Ice bags
Buffer	Liquid in PBS containing 50% glycerol, 0.5% protective protein and 0.02% New type preservative N.
Purification	Affinity purification

Application

Dilution Ratio	WB 1:500-1:2000,IHC 1:50-1:300,ELISA 1:2000-1:20000
Molecular Weight	59kDa

Antigen Information

Gene Name	RIOK3
Alternative Names	RIOK3; SUDD; Serine/threonine-protein kinase RIO3; RIO kinase 3; sudd homolog
Gene ID	8780.0
SwissProt ID	O14730
Immunogen	The antiserum was produced against synthesized peptide derived from human RIOK3. AA range:271-320

Background

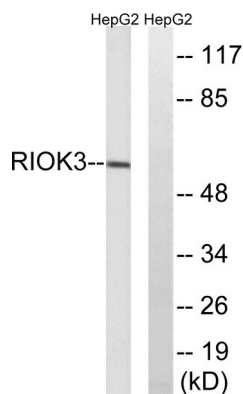
This gene was identified by the similarity of its product to the Aspergillus nidulans SUDD protein, an extragenic suppressor of

the heat-sensitive bimD6 mutation that fails to attach properly to the spindle microtubules at a restrictive temperature. The specific function of this gene has not yet been determined. [provided by RefSeq, Jul 2008],catalytic activity:ATP + a protein = ADP + a phosphoprotein.,similarity:Belongs to the protein kinase superfamily. RIO-type Ser/Thr kinase family.,similarity:Contains 1 protein kinase domain.,tissue specificity:Widely expressed.,

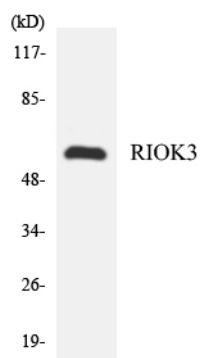
Research Area

Epigenetics and Nuclear Signaling; Chromosome Structure; Scaffold Proteins; Signal Transduction; Protein Phosphorylation; Ser / Thr Kinases; Other Kinases

Image Data



Western blot analysis of lysates from HepG2 cells, using RIOK3 Antibody. The lane on the right is blocked with the synthesized peptide.



Western blot analysis of the lysates from HeLa cells using RIOK3 antibody.