

Product Name: Stonin-1 Rabbit Polyclonal Antibody**Catalog #: APRab18402**

For research use only.

Summary

Description	Rabbit polyclonal Antibody
Host	Rabbit
Application	WB,IHC,ICC/IF,ELISA
Reactivity	Human,Rat,Mouse
Conjugation	Unconjugated
Modification	Unmodified
Isotype	IgG
Clonality	Polyclonal
Form	Liquid
Concentration	1mg/ml
Storage	Aliquot and store at -20°C (valid for 12 months). Avoid freeze/thaw cycles.
Shipping	Ice bags
Buffer	Liquid in PBS containing 50% glycerol, 0.5% protective protein and 0.02% New type preservative N.
Purification	Affinity purification

Application

Dilution Ratio	WB 1:500-1:2000,IHC 1:100-1:300,ICC/IF 1:200-1:1000,ELISA 1:5000-1:20000
Molecular Weight	83kDa

Antigen Information

Gene Name	STON1
Alternative Names	STON1; SALF; SBLF; STN1; Stonin-1; Stoned B-like factor
Gene ID	11037.0
SwissProt ID	Q9Y6Q2
Immunogen	The antiserum was produced against synthesized peptide derived from human STON1. AA range:686-735

Background

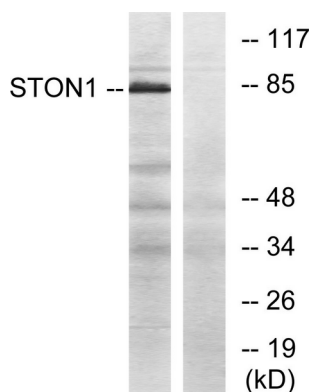
stonin 1(STON1) Homo sapiens Endocytosis of cell surface proteins is mediated by a complex molecular machinery that

assembles on the inner surface of the plasma membrane. This gene encodes one of two human homologs of the *Drosophila melanogaster* stoned B protein. This protein is related to components of the endocytic machinery and exhibits a modular structure consisting of an N-terminal proline-rich domain, a central region of homology specific to the human stoned B-like proteins, and a C-terminal region homologous to the mu subunits of adaptor protein (AP) complexes. Read-through transcription of this gene into the neighboring downstream gene, which encodes TFIIA-alpha/beta-like factor, generates a transcript (SALF), which encodes a fusion protein comprised of sequence sharing identity with each individual gene product. Alternative splicing results in multiple transcript variants. [provided by RefSeq, Oct 2010],caution:The sequence shown here is derived from an Ensembl automatic analysis pipeline and should be considered as preliminary data.,function:May be involved in the endocytic machinery.,function:May function as a testis specific transcription factor. Binds DNA in conjunction with GTF2A2 and TBP (the TATA-binding protein) and together with GTF2A2, allows mRNA transcription.,miscellaneous:In contrast to other members of the family, it does not contain NPF (Asn-Pro-Phe) sites and thereby does not interact with EPS15, EPS15R and ITSN1.,sequence caution:Chimeric cDNA. The biological existence and relevance of this product of both SALF (AC Q9Y6Q2) and GTF2A1LF genes, creating a chimeric protein of 1182 residues is uncertain.,sequence caution:Chimeric cDNA. The biological existence and relevance of this product of both SALF and GTF2A1LF (AC Q9UNN4) genes, which codes for a chimeric protein of 1182 residues is uncertain.,similarity:Belongs to the Stoned B family.,similarity:Belongs to the TFIIA subunit 1 family.,similarity:Contains 1 MHD (mu homology) domain.,similarity:Contains 1 SHD (stonin homology) domain.,subcellular location:Some fraction is membrane-associated.,tissue specificity:Testis specific.,tissue specificity:Ubiquitous.,

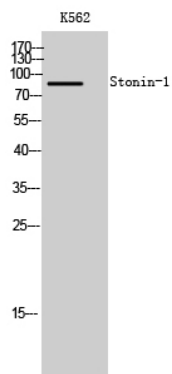
Research Area

Basal transcription factors;

Image Data



Western blot analysis of lysates from K562 cells, using STON1 Antibody. The lane on the right is blocked with the synthesized peptide.



Western Blot analysis of K562 cells using Stonin-1 Polyclonal Antibody