

---

**Product Name: STK32C Rabbit Polyclonal Antibody****Catalog #: APRab18394**

For research use only.

**Summary**

<b>Description</b>	Rabbit polyclonal Antibody
<b>Host</b>	Rabbit
<b>Application</b>	WB,IHC,ICC/IF,ELISA
<b>Reactivity</b>	Human,Mouse
<b>Conjugation</b>	Unconjugated
<b>Modification</b>	Unmodified
<b>Isotype</b>	IgG
<b>Clonality</b>	Polyclonal
<b>Form</b>	Liquid
<b>Concentration</b>	1mg/ml
<b>Storage</b>	Aliquot and store at -20°C (valid for 12 months). Avoid freeze/thaw cycles.
<b>Shipping</b>	Ice bags
<b>Buffer</b>	Liquid in PBS containing 50% glycerol, 0.5% protective protein and 0.02% New type preservative N.
<b>Purification</b>	Affinity purification

**Application**

**Dilution Ratio** WB 1:500-1:2000,IHC 1:100-1:300,ICC/IF 1:50-1:200,ELISA 1:5000-1:10000

**Molecular Weight**

**Antigen Information**

<b>Gene Name</b>	STK32C
<b>Alternative Names</b>	STK32C; Serine/threonine-protein kinase 32C; PKE; YANK3
<b>Gene ID</b>	282974.0
<b>SwissProt ID</b>	Q86UX6
<b>Immunogen</b>	The antiserum was produced against synthesized peptide derived from human STK32C. AA range:340-389

**Background**

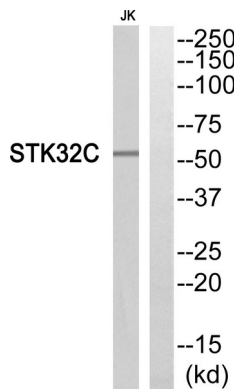
The protein encoded by this gene is a member of the serine/threonine protein kinase family. It is thought that this family

member is functional in brain due to its high expression levels there. DNA methylation differences have been found in this gene in monozygotic twins that are discordant for adolescent depression. Alternative splicing results in multiple transcript variants. [provided by RefSeq, Jan 2016], catalytic activity: ATP + a protein = ADP + a phosphoprotein., cofactor: Magnesium., similarity: Belongs to the protein kinase superfamily. Ser/Thr protein kinase family., similarity: Contains 1 protein kinase domain.,

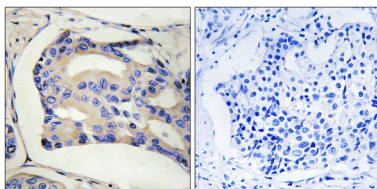
## Research Area

Signal Transduction; Protein Phosphorylation; Ser / Thr Kinases; Other Kinases

## Image Data



Western blot analysis of STK32C Antibody. The lane on the right is blocked with the STK32C peptide.



Immunohistochemistry analysis of paraffin-embedded human breast cancer, using STK32C Antibody. The picture on the right is blocked with the STK32C peptide.