

---

**Product Name: ST18 Rabbit Polyclonal Antibody****Catalog #: APRab18318**

For research use only.

**Summary**

<b>Description</b>	Rabbit polyclonal Antibody
<b>Host</b>	Rabbit
<b>Application</b>	WB,IHC,ICC/IF,ELISA
<b>Reactivity</b>	Human,Rat,Mouse
<b>Conjugation</b>	Unconjugated
<b>Modification</b>	Unmodified
<b>Isotype</b>	IgG
<b>Clonality</b>	Polyclonal
<b>Form</b>	Liquid
<b>Concentration</b>	1mg/ml
<b>Storage</b>	Aliquot and store at -20°C (valid for 12 months). Avoid freeze/thaw cycles.
<b>Shipping</b>	Ice bags
<b>Buffer</b>	Liquid in PBS containing 50% glycerol, 0.5% protective protein and 0.02% New type preservative N.
<b>Purification</b>	Affinity purification

**Application**

<b>Dilution Ratio</b>	WB 1:500-1:2000,IHC 1:100-1:300,ICC/IF 1:200-1:1000,ELISA 1:20000-1:40000
<b>Molecular Weight</b>	115kDa

**Antigen Information**

<b>Gene Name</b>	ST18
<b>Alternative Names</b>	ST18; KIAA0535; ZNF387; Suppression of tumorigenicity 18 protein; Zinc finger protein 387
<b>Gene ID</b>	9705.0
<b>SwissProt ID</b>	O60284
<b>Immunogen</b>	The antiserum was produced against synthesized peptide derived from human ZNF387. AA range:41-90

**Background**

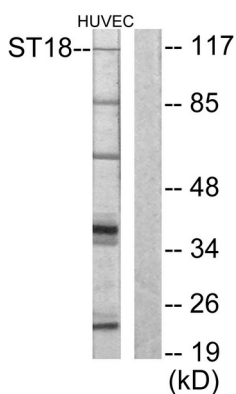
function:Repressor that binds to DNA sequences containing a bipartite element consisting of a direct repeat of the sequence

5'-AAAGTTT-3' separated by 2-9 nucleotides. Represses basal transcription activity from target promoters (By similarity). Inhibits colony formation in cultured breast cancer cells.,similarity:Contains 6 C2HC-type zinc fingers.,tissue specificity:Detected at low levels in heart, liver, kidney, skeletal muscel, pancreas, testis, ovary and prostate. Detected at even lower levels in mammary epithelial cells and breast cancer cells.,function:Repressor that binds to DNA sequences containing a bipartite element consisting of a direct repeat of the sequence 5'-AAAGTTT-3' separated by 2-9 nucleotides. Represses basal transcription activity from target promoters (By similarity). Inhibits colony formation in cultured breast cancer cells.,similarity:Contains 6 C2HC-type zinc fingers.,tissue specificity:Detected at low levels in heart, liver, kidney, skeletal muscel, pancreas, testis, ovary and prostate. Detected at even lower levels in mammary epithelial cells and breast cancer cells.,

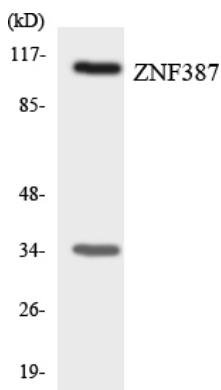
## Research Area

Epigenetics and Nuclear Signaling; Transcription; Co-factors; Cancer susceptibility; Proto-oncogenes

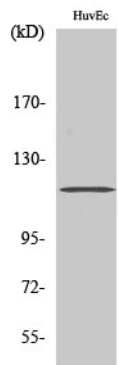
## Image Data



Western blot analysis of lysates from HUVEC cells, using ZNF387 Antibody. The lane on the right is blocked with the synthesized peptide.



Western blot analysis of the lysates from COLO205 cells using ZNF387 antibody.



Western Blot analysis of various cells using ST18 Polyclonal Antibody.