
Product Name: SSH3 Rabbit Polyclonal Antibody**Catalog #: APRab18300**

For research use only.

Summary

| | |
|----------------------|---|
| Description | Rabbit polyclonal Antibody |
| Host | Rabbit |
| Application | WB,IHC,ICC/IF,ELISA |
| Reactivity | Human,Mouse,Rat |
| Conjugation | Unconjugated |
| Modification | Unmodified |
| Isotype | IgG |
| Clonality | Polyclonal |
| Form | Liquid |
| Concentration | 1mg/ml |
| Storage | Aliquot and store at -20°C (valid for 12 months). Avoid freeze/thaw cycles. |
| Shipping | Ice bags |
| Buffer | Liquid in PBS containing 50% glycerol, 0.5% protective protein and 0.02% New type preservative N. |
| Purification | Affinity purification |

Application

| | |
|-------------------------|---|
| Dilution Ratio | WB 1:500-1:2000,IHC 1:100-1:300,ICC/IF 1:50-1:200,ELISA 1:20000-1:40000 |
| Molecular Weight | 74kDa |

Antigen Information

| | |
|--------------------------|--|
| Gene Name | SSH3 |
| Alternative Names | SSH3; SSH3L; Protein phosphatase Slingshot homolog 3; SSH-like protein 3; SSH-3L; hSSH-3L |
| Gene ID | 54961.0 |
| SwissProt ID | Q8TE77 |
| Immunogen | The antiserum was produced against synthesized peptide derived from human SSH3. AA range:357-406 |

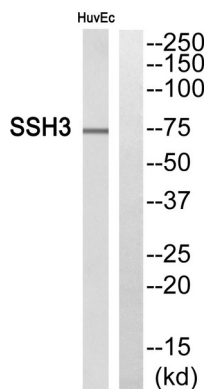
Background

The ADF (actin-depolymerizing factor)/cofilin family (see MIM 601442) is composed of stimulus-responsive mediators of actin dynamics. ADF/cofilin proteins are inactivated by kinases such as LIM domain kinase-1 (LIMK1; MIM 601329). The SSH family appears to play a role in actin dynamics by reactivating ADF/cofilin proteins in vivo (Niwa et al., 2002 [PubMed 11832213]). [supplied by OMIM, Mar 2008],catalytic activity:A phosphoprotein + H(2)O = a protein + phosphate.,catalytic activity:Protein tyrosine phosphate + H(2)O = protein tyrosine + phosphate.,function:Protein phosphatase which may play a role in the regulation of actin filament dynamics. Can dephosphorylate and activate the actin binding/depolymerizing factor cofilin, which subsequently binds to actin filaments and stimulates their disassembly.,miscellaneous:Tyrosine phosphatase activity has not been demonstrated for this protein to date.,PTM:Phosphorylated upon DNA damage, probably by ATM or ATR.,similarity:Belongs to the protein-tyrosine phosphatase family.,similarity:Contains 1 tyrosine-protein phosphatase domain.,subunit:Does not bind to, or colocalize with, filamentous actin.,

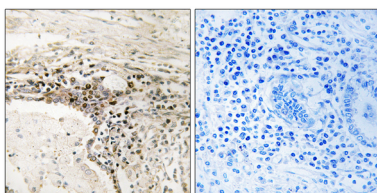
Research Area

Regulates Actin and Cytoskeleton;

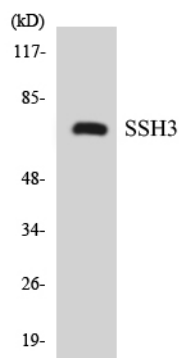
Image Data



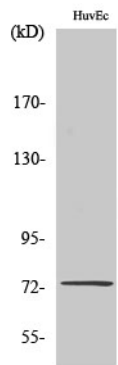
Western blot analysis of SSH3 Antibody. The lane on the right is blocked with the SSH3 peptide.



Immunohistochemistry analysis of paraffin-embedded human lung carcinoma, using SSH3 Antibody. The lane on the right is blocked with the SSH3 peptide.



Western blot analysis of the lysates from K562 cells using SSH3 antibody.



Western Blot analysis of various cells using SSH3 Polyclonal Antibody