
Product Name: SSBP1 Rabbit Polyclonal Antibody**Catalog #: APRab18297**

For research use only.

Summary

Description	Rabbit polyclonal Antibody
Host	Rabbit
Application	WB,IHC,ICC/IF,ELISA
Reactivity	Human,Mouse,Rat,Cow
Conjugation	Unconjugated
Modification	Unmodified
Isotype	IgG
Clonality	Polyclonal
Form	Liquid
Concentration	1mg/ml
Storage	Aliquot and store at -20°C (valid for 12 months). Avoid freeze/thaw cycles.
Shipping	Ice bags
Buffer	Liquid in PBS containing 50% glycerol, 0.5% protective protein and 0.02% New type preservative N.
Purification	Affinity purification

Application

Dilution Ratio	WB 1:500-1:2000,IHC 1:100-1:300,ICC/IF 1:200-1:1000,ELISA 1:10000-1:20000
Molecular Weight	17kDa

Antigen Information

Gene Name	SSBP1
Alternative Names	SSBP1; SSBP; Single-stranded DNA-binding protein; mitochondrial; Mt-SSB; MtSSB; PWP1-interacting protein 17
Gene ID	6742.0
SwissProt ID	Q04837
Immunogen	The antiserum was produced against synthesized peptide derived from human MtSSB. AA range:99-148

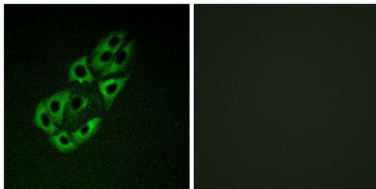
Background

SSBP1 is a housekeeping gene involved in mitochondrial biogenesis (Tiranti et al., 1995 [PubMed 7789991]). It is also a subunit of a single-stranded DNA (ssDNA)-binding complex involved in the maintenance of genome stability (Huang et al., 2009) [PubMed 19683501]. [supplied by OMIM, Feb 2010], function: This protein binds preferentially and cooperatively to ss-DNA. Probably involved in mitochondrial DNA replication., PTM: Phosphorylated upon DNA damage, probably by ATM or ATR., similarity: Contains 1 SSB domain., subunit: Homotetramer.,

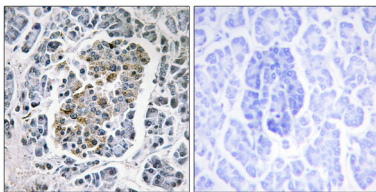
Research Area

DNA replication; Mismatch repair; Homologous recombination;

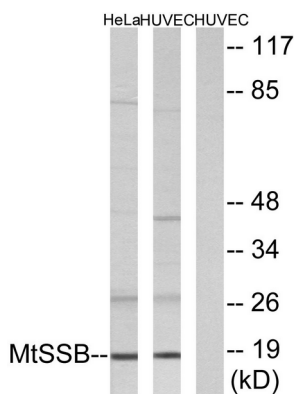
Image Data



Immunofluorescence analysis of A549 cells, using MtSSB Antibody. The picture on the right is blocked with the synthesized peptide.



Immunohistochemistry analysis of paraffin-embedded human pancreas tissue, using MtSSB Antibody. The picture on the right is blocked with the synthesized peptide.



Western blot analysis of lysates from HUVEC and HeLa cells, using MtSSB Antibody. The lane on the right is blocked with the synthesized peptide.



Western Blot analysis of various cells using SSBP1 Polyclonal Antibody

