

Product Name: SRPK3 Rabbit Polyclonal Antibody**Catalog #: AP Rab18284**

For research use only.

Summary

| | |
|----------------------|---|
| Description | Rabbit polyclonal Antibody |
| Host | Rabbit |
| Application | WB,ELISA |
| Reactivity | Human,Mouse,Rat |
| Conjugation | Unconjugated |
| Modification | Unmodified |
| Isotype | IgG |
| Clonality | Polyclonal |
| Form | Liquid |
| Concentration | 1mg/ml |
| Storage | Aliquot and store at -20°C (valid for 12 months). Avoid freeze/thaw cycles. |
| Shipping | Ice bags |
| Buffer | Liquid in PBS containing 50% glycerol, 0.5% protective protein and 0.02% New type preservative N. |
| Purification | Affinity purification |

Application

| | |
|-------------------------|--------------------------------------|
| Dilution Ratio | WB 1:500-1:2000,ELISA 1:5000-1:20000 |
| Molecular Weight | 60kDa |

Antigen Information

| | |
|--------------------------|---|
| Gene Name | SRPK3 SRPK3; MSSK1; STK23; SRSF protein kinase 3; Muscle-specific serine kinase 1; MSSK-1; |
| Alternative Names | Serine/arginine-rich protein-specific kinase 3; SR-protein-specific kinase 3; Serine/threonine-protein kinase 23 |
| Gene ID | 26576.0 |
| SwissProt ID | Q9UPE1 |
| Immunogen | The antiserum was produced against synthesized peptide derived from human SRPK3. AA range:261-310 |

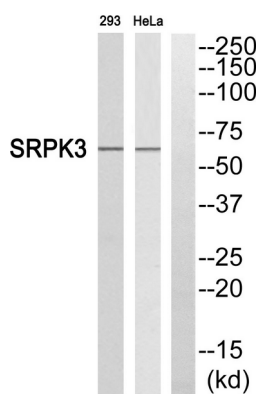
Background

This gene encodes a protein kinase similar to a protein kinase which is specific for the SR (serine/arginine-rich domain) family of splicing factors. A highly similar protein has been shown to play a role in muscle development in mice. Multiple transcript variants encoding different isoforms have been found for this gene. [provided by RefSeq, Dec 2009],catalytic activity:ATP + a protein = ADP + a phosphoprotein.,function:Required for normal muscle development.,similarity:Belongs to the protein kinase superfamily.,similarity:Belongs to the protein kinase superfamily. CMGC Ser/Thr protein kinase family.,similarity:Contains 1 protein kinase domain.,tissue specificity:Exclusively expressed in skeletal and heart muscle.,

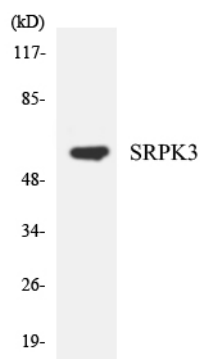
Research Area

Signal Transduction; Protein Phosphorylation; Ser / Thr Kinases; Other Kinases; Developmental Biology; Organogenesis; Skeletal development; Muscle

Image Data



Western blot analysis of SRPK3 Antibody. The lane on the right is blocked with the SRPK3 peptide.



Western blot analysis of the lysates from HeLa cells using SRPK3 antibody.