

Product Name: SRp46 Rabbit Polyclonal Antibody**Catalog #: APRab18278**

For research use only.

Summary

Description	Rabbit polyclonal Antibody
Host	Rabbit
Application	WB,IHC,ICC/IF,ELISA
Reactivity	Human,Rat,Mouse
Conjugation	Unconjugated
Modification	Unmodified
Isotype	IgG
Clonality	Polyclonal
Form	Liquid
Concentration	1mg/ml
Storage	Aliquot and store at -20°C (valid for 12 months). Avoid freeze/thaw cycles.
Shipping	Ice bags
Buffer	Liquid in PBS containing 50% glycerol, 0.5% protective protein and 0.02% New type preservative N.
Purification	Affinity purification

Application

Dilution Ratio	WB 1:500-1:2000,IHC 1:100-1:300,ICC/IF 1:50-1:200,ELISA 1:20000-1:40000
Molecular Weight	32kDa

Antigen Information

Gene Name	SRSF8
Alternative Names	SRSF8; SFRS2B; SRP46; Serine/arginine-rich splicing factor 8; Pre-mRNA-splicing factor SRP46; Splicing factor SRp46; Splicing factor; arginine/serine-rich 2B
Gene ID	10929.0
SwissProt ID	Q9BRL6
Immunogen	The antiserum was produced against synthesized peptide derived from human SFRS2B. AA range:31-80

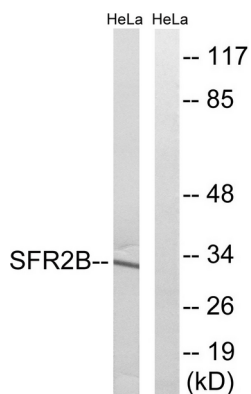
Background

This gene encodes a member of a family of proteins containing a ribonucleoprotein (RNP)-type RNA binding motif and a carboxyl-terminal arginine-serine-rich (RS) domain. The encoded protein functions as a pre-mRNA splicing factor. There is a pseudogene for this gene on chromosome 7. Alternative splicing results in multiple transcript variants. [provided by RefSeq, Jun 2013],function:Involved in pre-mRNA alternative splicing.,PTM:Phosphorylated.,similarity:Belongs to the splicing factor SR family.,similarity:Contains 1 RRM (RNA recognition motif) domain.,tissue specificity:Strongly expressed in pancreas, spleen and prostate. Weakly expressed in lung, liver and thymus.,

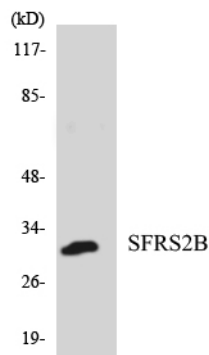
Research Area

Spliceosome;

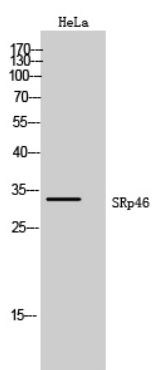
Image Data



Western blot analysis of lysates from HeLa cells, using SFRS2B Antibody. The lane on the right is blocked with the synthesized peptide.



Western blot analysis of the lysates from HepG2 cells using SFRS2B antibody.



Western Blot analysis of HeLa cells using SRp46 Polyclonal Antibody cells nucleus extracted by Minute TM Cytoplasmic and Nuclear Fractionation kit (SC-003, Invent biotech, MN, USA) .

