

Product Name: SREC-II Rabbit Polyclonal Antibody**Catalog #: APRab18266**

For research use only.

Summary

Description	Rabbit polyclonal Antibody
Host	Rabbit
Application	IHC, ICC/IF, ELISA
Reactivity	Human, Rat, Mouse
Conjugation	Unconjugated
Modification	Unmodified
Isotype	IgG
Clonality	Polyclonal
Form	Liquid
Concentration	1mg/ml
Storage	Aliquot and store at -20°C (valid for 12 months). Avoid freeze/thaw cycles.
Shipping	Ice bags
Buffer	Liquid in PBS containing 50% glycerol, 0.5% protective protein and 0.02% New type preservative N.
Purification	Affinity purification

Application

Dilution Ratio IHC 1:100-1:300, ICC/IF 1:50-1:200, ELISA 1:20000-1:40000

Molecular Weight

Antigen Information

Gene Name	SCARF2
Alternative Names	SCARF2; SREC2; SREPCR; Scavenger receptor class F member 2; SRECRP-1; Scavenger receptor expressed by endothelial cells 2 protein; SREC-II
Gene ID	91179.0
SwissProt ID	Q96GP6
Immunogen	The antiserum was produced against synthesized peptide derived from human SCARF2. AA range:677-726

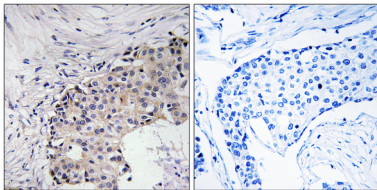
Background

The protein encoded by this gene is similar to SCARF1/SREC-I, a scavenger receptor protein that mediates the binding and degradation of acetylated low density lipoprotein (Ac-LDL). This protein has only little activity of internalizing modified low density lipoproteins (LDL), but it can interact with SCARF1 through its extracellular domain. The association of this protein with SCARF1 is suppressed by the presence of scavenger ligands. Alternatively spliced transcript variants encoding distinct isoforms have been reported. [provided by RefSeq, Jul 2008],function:Probable adhesion protein, which mediates homophilic and heterophilic interactions. In contrast to SCARF1, it poorly mediates the binding and degradation of acetylated low density lipoprotein (Ac-LDL),similarity:Contains 7 EGF-like domains,subunit:Homophilic and heterophilic interaction via its extracellular domain. Interacts with SCARF1. The heterophilic interaction with SCARF1, which is stronger than the homophilic interaction with itself, is suppressed by the presence of SCARF1 ligand such as Ac-LDL,tissue specificity:Predominantly expressed in endothelial cells. Expressed in heart, placenta, lung, kidney, spleen, small intestine and ovary,.

Research Area

Cardiovascular; Vasculature; Endothelium

Image Data



Immunohistochemistry analysis of paraffin-embedded human breast carcinoma, using SCARF2 Antibody. The picture on the right is blocked with the synthesized peptide.