

---

**Product Name: Srb7 Rabbit Polyclonal Antibody****Catalog #: APRab18257**

For research use only.

**Summary**

<b>Description</b>	Rabbit polyclonal Antibody
<b>Host</b>	Rabbit
<b>Application</b>	IHC,ICC/IF,ELISA
<b>Reactivity</b>	Human,Mouse
<b>Conjugation</b>	Unconjugated
<b>Modification</b>	Unmodified
<b>Isotype</b>	IgG
<b>Clonality</b>	Polyclonal
<b>Form</b>	Liquid
<b>Concentration</b>	1mg/ml
<b>Storage</b>	Aliquot and store at -20°C (valid for 12 months). Avoid freeze/thaw cycles.
<b>Shipping</b>	Ice bags
<b>Buffer</b>	Liquid in PBS containing 50% glycerol, 0.5% protective protein and 0.02% New type preservative N.
<b>Purification</b>	Affinity purification

**Application**

**Dilution Ratio** IHC 1:100-1:300,ICC/IF 1:50-1:200,ELISA 1:10000-1:20000

**Molecular Weight**

**Antigen Information**

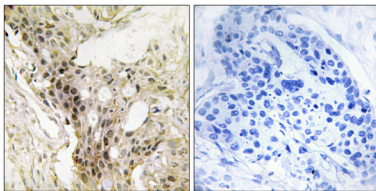
<b>Gene Name</b>	MED21 MED21; SRB7; SURB7; Mediator of RNA polymerase II transcription subunit 21; Mediator
<b>Alternative Names</b>	complex subunit 21; RNA polymerase II holoenzyme component SRB7; RNAPII complex component SRB7; hSrb7
<b>Gene ID</b>	9412.0
<b>SwissProt ID</b>	Q13503
<b>Immunogen</b>	The antiserum was produced against synthesized peptide derived from human MED21. AA range:71-120

## Background

This gene encodes a member of the mediator complex subunit 21 family. The encoded protein interacts with the human RNA polymerase II holoenzyme and is involved in transcriptional regulation of RNA polymerase II transcribed genes. A pseudogene of this gene is located on chromosome 8. Alternative splicing results in multiple transcript variants. [provided by RefSeq, Nov 2012],function:Component of the Mediator complex, a coactivator involved in the regulated transcription of nearly all RNA polymerase II-dependent genes. Mediator functions as a bridge to convey information from gene-specific regulatory proteins to the basal RNA polymerase II transcription machinery. Mediator is recruited to promoters by direct interactions with regulatory proteins and serves as a scaffold for the assembly of a functional preinitiation complex with RNA polymerase II and the general transcription factors.,similarity:Belongs to the Mediator complex subunit 21 family.,subunit:Interacts with PPARG (By similarity). Component of the Mediator complex, which is composed of MED1, MED4, MED6, MED7, MED8, MED9, MED10, MED11, MED12, MED13, MED13L, MED14, MED15, MED16, MED17, MED18, MED19, MED20, MED21, MED22, MED23, MED24, MED25, MED26, MED27, MED29, MED30, MED31, CCNC, CDK8 and CDC2L6/CDK11. The MED12, MED13, CCNC and CDK8 subunits form a distinct module termed the CDK8 module. Mediator containing the CDK8 module is less active than Mediator lacking this module in supporting transcriptional activation. Individual preparations of the Mediator complex lacking one or more distinct subunits have been variously termed ARC, CRSP, DRIP, PC2, SMCC and TRAP. Interacts with THRA in a ligand-dependent fashion.,

## Research Area

### Image Data



Immunohistochemistry analysis of paraffin-embedded human breast carcinoma tissue, using MED21 Antibody. The picture on the right is blocked with the synthesized peptide.