
Product Name: SR-6 Rabbit Polyclonal Antibody**Catalog #: APRab18255**

For research use only.

Summary

Description	Rabbit polyclonal Antibody
Host	Rabbit
Application	WB,ELISA
Reactivity	Human,Mouse,Rat
Conjugation	Unconjugated
Modification	Unmodified
Isotype	IgG
Clonality	Polyclonal
Form	Liquid
Concentration	1mg/ml
Storage	Aliquot and store at -20°C (valid for 12 months). Avoid freeze/thaw cycles.
Shipping	Ice bags
Buffer	Liquid in PBS containing 50% glycerol, 0.5% protective protein and 0.02% New type preservative N.
Purification	Affinity purification

Application

Dilution Ratio	WB 1:500-1:2000,ELISA 1:10000-1:20000
Molecular Weight	47kDa

Antigen Information

Gene Name	HTR6
Alternative Names	HTR6; 5-hydroxytryptamine receptor 6; 5-HT-6; 5-HT6; Serotonin receptor 6
Gene ID	3362.0
SwissProt ID	P50406
Immunogen	The antiserum was produced against synthesized peptide derived from human 5-HT-6. AA range:221-270

Background

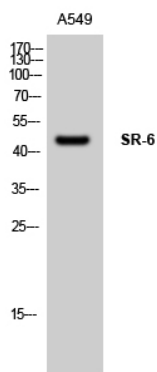
This gene encodes a protein that belongs to the seven-transmembrane G protein-coupled receptor family of proteins. The

encoded protein couples with the Gs alpha subunit and stimulates adenylate cyclase to activate the cyclic AMP-dependent signaling pathway. This receptor is thought to regulate cholinergic neuronal transmission in the brain. Several antidepressants and antipsychotic drugs have a high affinity for this receptor. [provided by RefSeq, Aug 2013],function:This is one of the several different receptors for 5-hydroxytryptamine (serotonin), a biogenic amine that functions as a neurotransmitter, a hormone, and a mitogen. The activity of this receptor is mediated by G proteins that stimulate adenylate cyclase. It has a high affinity for tricyclic psychotropic drugs.,similarity:Belongs to the G-protein coupled receptor 1 family.,tissue specificity:Expressed in several human brain regions, most prominently in the caudate nucleus.,

Research Area

Calcium;Neuroactive ligand-receptor interaction;

Image Data



Western Blot analysis of A549 cells using SR-6 Polyclonal Antibody