

**Product Name: SR-5B Rabbit Polyclonal Antibody****Catalog #: APRab18254**

For research use only.

**Summary**

<b>Description</b>	Rabbit polyclonal Antibody
<b>Host</b>	Rabbit
<b>Application</b>	WB,ICC/IF,ELISA
<b>Reactivity</b>	Mouse,Rat
<b>Conjugation</b>	Unconjugated
<b>Modification</b>	Unmodified
<b>Isotype</b>	IgG
<b>Clonality</b>	Polyclonal
<b>Form</b>	Liquid
<b>Concentration</b>	1mg/ml
<b>Storage</b>	Aliquot and store at -20°C (valid for 12 months). Avoid freeze/thaw cycles.
<b>Shipping</b>	Ice bags
<b>Buffer</b>	Liquid in PBS containing 50% glycerol, 0.5% protective protein and 0.02% New type preservative N.
<b>Purification</b>	Affinity purification

**Application**

<b>Dilution Ratio</b>	WB 1:500-1:2000,ICC/IF 1:200-1:1000,ELISA 1:20000-1:40000
<b>Molecular Weight</b>	38kDa

**Antigen Information**

<b>Gene Name</b>	HTR5B
<b>Alternative Names</b>	
<b>Gene ID</b>	
<b>SwissProt ID</b>	
<b>Immunogen</b>	The antiserum was produced against synthesized peptide derived from rat HTR5B. AA range:280-329

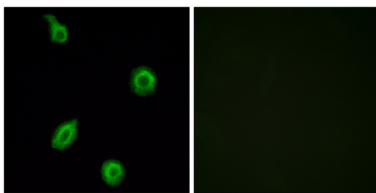
**Background**

This is one of the several different receptors for 5-hydroxytryptamine (serotonin), a biogenic hormone that functions as a

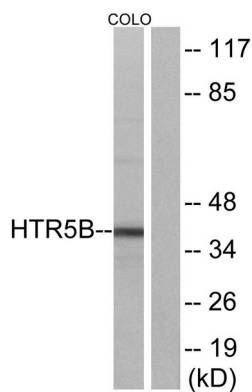
neurotransmitter, a hormone, and a mitogen. The activity of this receptor is mediated by G proteins. Probably involved in anxiety and depression.

## Research Area

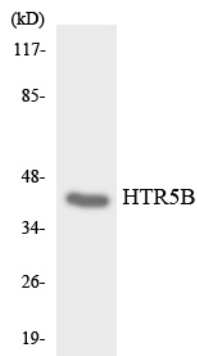
## Image Data



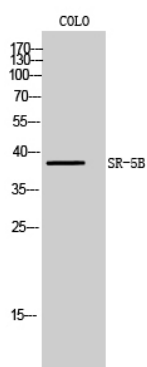
Immunofluorescence analysis of HUVEC cells, using HTR5B Antibody. The picture on the right is blocked with the synthesized peptide.



Western blot analysis of lysates from COLO cells, using HTR5B Antibody. The lane on the right is blocked with the synthesized peptide.



Western blot analysis of the lysates from HepG2 cells using HTR5B antibody.



Western Blot analysis of COLO cells using SR-5B Polyclonal Antibody

