
Product Name: SR-1F Rabbit Polyclonal Antibody**Catalog #: APRab18246**

For research use only.

Summary

Description	Rabbit polyclonal Antibody
Host	Rabbit
Application	WB,IHC,ELISA
Reactivity	Human,Mouse,Rat,Monkey
Conjugation	Unconjugated
Modification	Unmodified
Isotype	IgG
Clonality	Polyclonal
Form	Liquid
Concentration	1mg/ml
Storage	Aliquot and store at -20°C (valid for 12 months). Avoid freeze/thaw cycles.
Shipping	Ice bags
Buffer	Liquid in PBS containing 50% glycerol, 0.5% protective protein and 0.02% New type preservative N.
Purification	Affinity purification

Application

Dilution Ratio	WB 1:500-1:2000,IHC 1:50-1:300,ELISA 1:2000-1:20000
Molecular Weight	38kDa

Antigen Information

Gene Name	HTR1F
Alternative Names	HTR1F; HTR1EL; 5-hydroxytryptamine receptor 1F; 5-HT-1F; 5-HT1F; Serotonin receptor 1F
Gene ID	3355.0
SwissProt ID	P30939
Immunogen	The antiserum was produced against synthesized peptide derived from human 5-HT-1F. AA range:101-150

Background

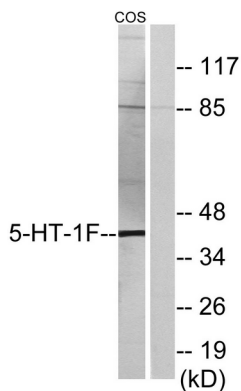
function:This is one of the several different receptors for 5-hydroxytryptamine (serotonin), a biogenic hormone that functions

as a neurotransmitter, a hormone, and a mitogen. The activity of this receptor is mediated by G proteins that inhibit adenylate cyclase activity.,similarity:Belongs to the G-protein coupled receptor 1 family.,function:This is one of the several different receptors for 5-hydroxytryptamine (serotonin), a biogenic hormone that functions as a neurotransmitter, a hormone, and a mitogen. The activity of this receptor is mediated by G proteins that inhibit adenylate cyclase activity.,similarity:Belongs to the G-protein coupled receptor 1 family.,

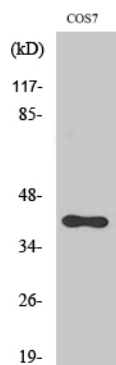
Research Area

Neuroactive ligand-receptor interaction;

Image Data



Western blot analysis of lysates from COS7 cells, using 5-HT-1F Antibody. The lane on the right is blocked with the synthesized peptide.



Western Blot analysis of various cells using SR-1F Polyclonal Antibody diluted at 1:1000