

Product Name: SR-1E Rabbit Polyclonal Antibody**Catalog #: APRab18245**

For research use only.

Summary

Description	Rabbit polyclonal Antibody
Host	Rabbit
Application	IHC, ICC/IF, ELISA
Reactivity	Human
Conjugation	Unconjugated
Modification	Unmodified
Isotype	IgG
Clonality	Polyclonal
Form	Liquid
Concentration	1mg/ml
Storage	Aliquot and store at -20°C (valid for 12 months). Avoid freeze/thaw cycles.
Shipping	Ice bags
Buffer	Liquid in PBS containing 50% glycerol, 0.5% protective protein and 0.02% New type preservative N.
Purification	Affinity purification

Application

Dilution Ratio	IHC 1:50-1:200, ICC/IF 1:50-1:300, ELISA 1:2000-1:20000
Molecular Weight	42kDa

Antigen Information

Gene Name	HTR1E
Alternative Names	HTR1E; 5-hydroxytryptamine receptor 1E; 5-HT-1E; 5-HT1E; S31; Serotonin receptor 1E
Gene ID	3354.0
SwissProt ID	P28566
Immunogen	The antiserum was produced against synthesized peptide derived from human 5-HT-1E. AA range:101-150

Background

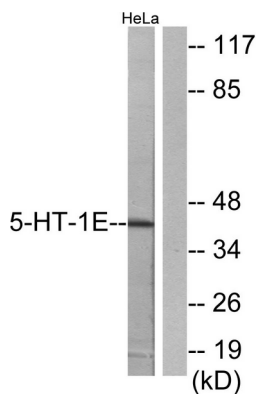
function: This is one of the several different receptors for 5-hydroxytryptamine (serotonin), a biogenic hormone that functions

as a neurotransmitter, a hormone, and a mitogen. The activity of this receptor is mediated by G proteins that inhibit adenylate cyclase activity.,similarity:Belongs to the G-protein coupled receptor 1 family.The activity of this receptor is mediated by G proteins that inhibit adenylate cyclase activity.,similarity:Belongs to the G-protein coupled receptor 1 family.

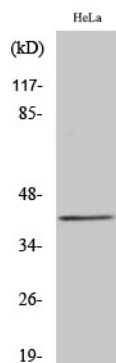
Research Area

Neuroactive ligand-receptor interaction;

Image Data



Western blot analysis of lysates from HeLa cells, using 5-HT-1E Antibody. The lane on the right is blocked with the synthesized peptide.



Western Blot analysis of various cells using SR-1E Polyclonal Antibody