

Product Name: SR-1A Rabbit Polyclonal Antibody

Catalog #: APRab18242

For research use only.

Summary

Description	Rabbit polyclonal Antibody
Host	Rabbit
Application	WB,IHC,ICC/IF,ELISA
Reactivity	Human,Mouse,Rat
Conjugation	Unconjugated
Modification	Unmodified
Isotype	IgG
Clonality	Polyclonal
Form	Liquid
Concentration	1mg/ml
Storage	Aliquot and store at -20°C (valid for 12 months). Avoid freeze/thaw cycles.
Shipping	Ice bags
Buffer	Liquid in PBS containing 50% glycerol, 0.5% protective protein and 0.02% New type preservative N.
Purification	Affinity purification

Application

Dilution Ratio	WB 1:500-1:2000,IHC 1:100-1:300,ICC/IF 1:200-1:1000,ELISA 1:10000-1:20000
Molecular Weight	46kDa

Antigen Information

Gene Name	HTR1A
Alternative Names	HTR1A; ADRB2RL1; ADRBRL1; 5-hydroxytryptamine receptor 1A; 5-HT-1A; 5-HT1A; G-21; Serotonin receptor 1A
Gene ID	3350.0
SwissProt ID	P08908
Immunogen	The antiserum was produced against synthesized peptide derived from human 5-HT-1A. AA range:291-340

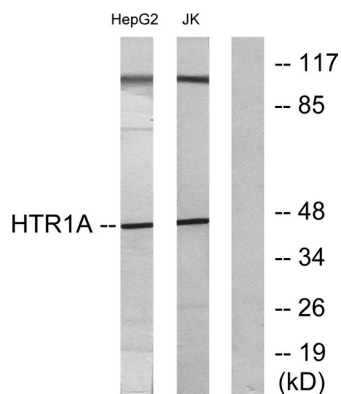
Background

This gene encodes a G protein-coupled receptor for 5-hydroxytryptamine (serotonin), and belongs to the 5-hydroxytryptamine receptor subfamily. Serotonin has been implicated in a number of physiologic processes and pathologic conditions. Inactivation of this gene in mice results in behavior consistent with an increased anxiety and stress response. Mutation in the promoter of this gene has been associated with menstrual cycle-dependent periodic fevers. [provided by RefSeq, Jun 2012],function:This is one of the several different receptors for 5-hydroxytryptamine (serotonin), a biogenic hormone that functions as a neurotransmitter, a hormone, and a mitogen. The activity of this receptor is mediated by G proteins that inhibit adenylate cyclase activity.,similarity:Belongs to the G-protein coupled receptor 1 family.,

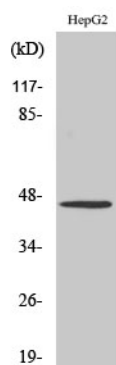
Research Area

Neuroactive ligand-receptor interaction;

Image Data



Western blot analysis of lysates from HepG2 and Jurkat cells, using 5-HT-1A Antibody. The lane on the right is blocked with the synthesized peptide.



Western Blot analysis of various cells using SR-1A Polyclonal Antibody diluted at 1:500