

---

**Product Name: SPTN4 Rabbit Polyclonal Antibody****Catalog #: APRab18232**

For research use only.

**Summary**

<b>Description</b>	Rabbit polyclonal Antibody
<b>Host</b>	Rabbit
<b>Application</b>	IHC,ICC/IF
<b>Reactivity</b>	Human,Rat,Mouse
<b>Conjugation</b>	Unconjugated
<b>Modification</b>	Unmodified
<b>Isotype</b>	IgG
<b>Clonality</b>	Polyclonal
<b>Form</b>	Liquid
<b>Concentration</b>	1mg/ml
<b>Storage</b>	Aliquot and store at -20°C (valid for 12 months). Avoid freeze/thaw cycles.
<b>Shipping</b>	Ice bags
<b>Buffer</b>	Liquid in PBS containing 50% glycerol, and 0.02% New type preservative N.
<b>Purification</b>	Affinity purification

**Application**

<b>Dilution Ratio</b>	IHC 1:50-1:300,ICC/IF 1:50-1:200
<b>Molecular Weight</b>	282kDa

**Antigen Information**

<b>Gene Name</b>	SPTBN4
<b>Alternative Names</b>	KIAA1642 SPTBN3
<b>Gene ID</b>	57731.0
<b>SwissProt ID</b>	Q9H254
<b>Immunogen</b>	Synthesized peptide derived from part region of human protein

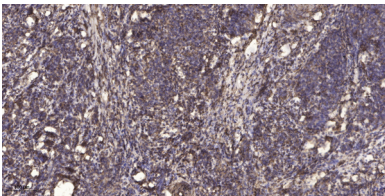
**Background**

Spectrin is an actin crosslinking and molecular scaffold protein that links the plasma membrane to the actin cytoskeleton, and functions in the determination of cell shape, arrangement of transmembrane proteins, and organization of organelles. It is composed of two antiparallel dimers of alpha- and beta- subunits. This gene is one member of a family of beta-spectrin genes.

The encoded protein localizes to the nuclear matrix, PML nuclear bodies, and cytoplasmic vesicles. A highly similar gene in the mouse is required for localization of specific membrane proteins in polarized regions of neurons. Multiple transcript variants encoding different isoforms have been found for this gene. [provided by RefSeq, Jul 2008],similarity:Belongs to the spectrin family.,similarity:Contains 1 PH domain.,similarity:Contains 18 spectrin repeats.,similarity:Contains 2 CH (calponin-homology) domains.,tissue specificity:Abundantly expressed in brain and pancreatic islets.,

## Research Area

## Image Data



Immunohistochemical analysis of paraffin-embedded human cervical carcinoma. 1, Antibody was diluted at 1:200 (4° overnight) . 2, Tris-EDTA,pH9.0 was used for antigen retrieval. 3,Secondary antibody was diluted at 1:200 (room temperature, 45min) .