

---

**Product Name: Splicing factor 1 Rabbit Polyclonal Antibody****Catalog #: APRab18202**

For research use only.

**Summary**

<b>Description</b>	Rabbit polyclonal Antibody
<b>Host</b>	Rabbit
<b>Application</b>	WB,IHC,ICC/IF,ELISA
<b>Reactivity</b>	Human,Mouse
<b>Conjugation</b>	Unconjugated
<b>Modification</b>	Unmodified
<b>Isotype</b>	IgG
<b>Clonality</b>	Polyclonal
<b>Form</b>	Liquid
<b>Concentration</b>	1mg/ml
<b>Storage</b>	Aliquot and store at -20°C (valid for 12 months). Avoid freeze/thaw cycles.
<b>Shipping</b>	Ice bags
<b>Buffer</b>	Liquid in PBS containing 50% glycerol, 0.5% protective protein and 0.02% New type preservative N.
<b>Purification</b>	Affinity purification

**Application**

<b>Dilution Ratio</b>	WB 1:500-1:2000,IHC 1:100-1:300,ICC/IF 1:200-1:1000,ELISA 1:10000-1:20000
<b>Molecular Weight</b>	68kDa

**Antigen Information**

<b>Gene Name</b>	SF1
<b>Alternative Names</b>	SF1; ZFM1; ZNF162; Splicing factor 1; Mammalian branch point-binding protein; BBP; mBBP; Transcription factor ZFM1; Zinc finger gene in MEN1 locus; Zinc finger protein 162
<b>Gene ID</b>	7536.0
<b>SwissProt ID</b>	Q15637
<b>Immunogen</b>	The antiserum was produced against synthesized peptide derived from human SF1. AA range:48-97

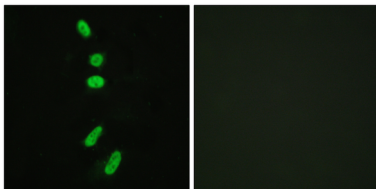
**Background**

This gene encodes a nuclear pre-mRNA splicing factor. The encoded protein specifically recognizes the intron branch point sequence at the 3' splice site, together with the large subunit of U2 auxiliary factor (U2AF), and is required for the early stages of spliceosome assembly. It also plays a role in nuclear pre-mRNA retention and transcriptional repression. The encoded protein contains an N-terminal U2AF ligand motif, a central hnRNP K homology motif and quaking 2 region which bind a key branch-site adenosine within the branch point sequence, a zinc knuckles domain, and a C-terminal proline-rich domain. Alternative splicing results in multiple transcript variants. [provided by RefSeq, Oct 2016], alternative products: Additional isoforms seem to exist, function: Necessary for the ATP-dependent first step of spliceosome assembly. Binds to the intron branch point sequence (BPS) 5'-UACUAAC-3' of the pre-mRNA. May act as transcription repressor., PTM: Phosphorylation on Ser-20 interferes with U2AF2 binding and spliceosome assembly. Isoform 6 is phosphorylated on Ser-463., similarity: Belongs to the BBP/SF1 family., similarity: Contains 1 CCHC-type zinc finger., similarity: Contains 1 KH domain., subunit: Binds U2AF2. Interacts with U1 snRNA. Binds EWSR1, FUS and TAF15., tissue specificity: Detected in lung, ovary, adrenal gland, colon, kidney, muscle, pancreas, thyroid, placenta, brain, liver and heart.,

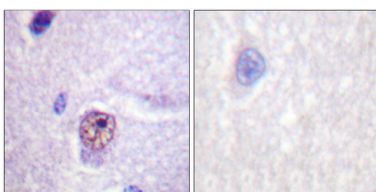
## Research Area

Epigenetics and Nuclear Signaling; Transcription; Domain Families; Zinc Finger; DNA / RNA; RNA Processing; Splicing; Transcription Factors

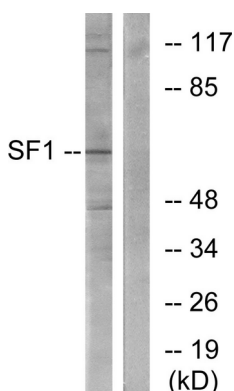
## Image Data



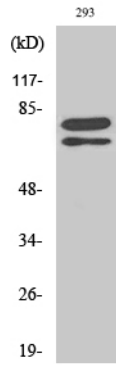
Immunofluorescence analysis of HeLa cells, using SF1 Antibody. The picture on the right is blocked with the synthesized peptide.



Immunohistochemistry analysis of paraffin-embedded human brain tissue, using SF1 Antibody. The picture on the right is blocked with the synthesized peptide.



Western blot analysis of lysates from COLO205 cells, using SF1 Antibody. The lane on the right is blocked with the synthesized peptide.



Western Blot analysis of various cells using Splicing factor 1 Polyclonal Antibody diluted at 1: 500