

Product Name: SPINK6 Rabbit Polyclonal Antibody**Catalog #: APRab18197**

For research use only.

Summary

Description	Rabbit polyclonal Antibody
Host	Rabbit
Application	IHC, ICC/IF, ELISA
Reactivity	Human, Rat, Mouse
Conjugation	Unconjugated
Modification	Unmodified
Isotype	IgG
Clonality	Polyclonal
Form	Liquid
Concentration	1mg/ml
Storage	Aliquot and store at -20°C (valid for 12 months). Avoid freeze/thaw cycles.
Shipping	Ice bags
Buffer	Liquid in PBS containing 50% glycerol, 0.5% protective protein and 0.02% New type preservative N.
Purification	Affinity purification

Application

Dilution Ratio IHC 1:100-1:300, ICC/IF 1:50-1:200, ELISA 1:20000-1:40000

Molecular Weight

Antigen Information

Gene Name	SPINK6
Alternative Names	SPINK6; Serine protease inhibitor Kazal-type 6; Kallikrein inhibitor
Gene ID	404203.0
SwissProt ID	Q6UWN8
Immunogen	The antiserum was produced against synthesized peptide derived from human SPINK6. AA range:13-62

Background

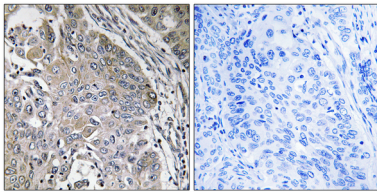
The protein encoded by this gene is a Kazal-type serine protease inhibitor that acts on kallikrein-related peptidases in the skin.

Two transcript variants the same protein have been found for this gene. [provided by RefSeq, Aug 2010],function:Probable serine protease inhibitor.,similarity:Contains 1 Kazal-like domain.,

Research Area

Cell Biology; Proteolysis / Ubiquitin; Protease inhibitors; Other protease inhibitors

Image Data



Immunohistochemistry analysis of paraffin-embedded human lung carcinoma, using SPINK6 Antibody. The picture on the right is blocked with the synthesized peptide.