
Product Name: Spindlin-1 Rabbit Polyclonal Antibody**Catalog #: APRab18194**

For research use only.

Summary

Description	Rabbit polyclonal Antibody
Host	Rabbit
Application	WB,IHC,ICC/IF,ELISA
Reactivity	Human,Mouse,Rat
Conjugation	Unconjugated
Modification	Unmodified
Isotype	IgG
Clonality	Polyclonal
Form	Liquid
Concentration	1mg/ml
Storage	Aliquot and store at -20°C (valid for 12 months). Avoid freeze/thaw cycles.
Shipping	Ice bags
Buffer	Liquid in PBS containing 50% glycerol, 0.5% protective protein and 0.02% New type preservative N.
Purification	Affinity purification

Application

Dilution Ratio	WB 1:500-1:2000,IHC 1:100-1:300,ICC/IF 1:200-1:1000,ELISA 1:10000-1:20000
Molecular Weight	30kDa

Antigen Information

Gene Name	SPIN1
Alternative Names	SPIN1; OCR; SPIN; Spindlin-1; Ovarian cancer-related protein
Gene ID	10927.0
SwissProt ID	Q9Y657
Immunogen	The antiserum was produced against synthesized peptide derived from human SPIN1. AA range:111-160

Background

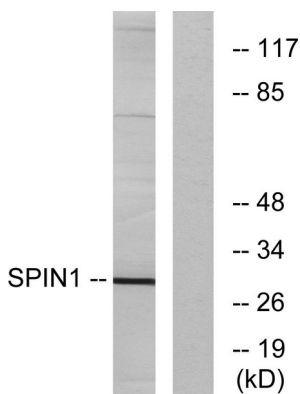
function:May play a role in cell-cycle regulation during the transition from gamete to embryo.,PTM:Phosphorylated during

oocyte meiotic maturation.,sequence caution:Translated as Glu.,similarity:Belongs to the SPIN/STSY family.,function:May play a role in cell-cycle regulation during the transition from gamete to embryo.,PTM:Phosphorylated during oocyte meiotic maturation.,sequence caution:Translated as Glu.,similarity:Belongs to the SPIN/STSY family.,

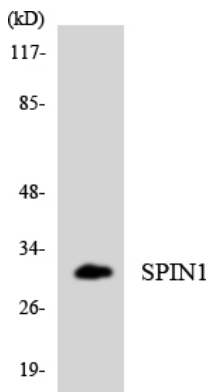
Research Area

Cell Biology; Cell Cycle; Cell Division; Spindle; Apoptosis; Nucleus; Epigenetics and Nuclear Signaling; Chromatin Binding Proteins; DNA / RNA binding; Cancer; Developmental Biology; Reproduction; Germ cell markers; Cell Death; Apoptosis; Nucleus

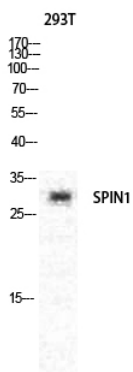
Image Data



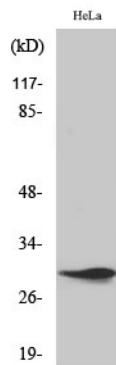
Western blot analysis of lysates from HeLa cells, using SPIN1 Antibody. The lane on the right is blocked with the synthesized peptide.



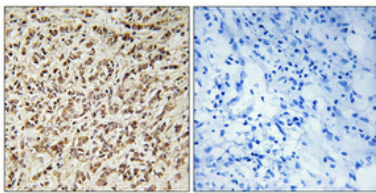
Western blot analysis of the lysates from K562 cells using SPIN1 antibody.



Western Blot analysis of various cells using Spindlin-1 Polyclonal Antibody diluted at 1: 1000.



Western Blot analysis of HeLa cells using Spindlin-1 Polyclonal Antibody diluted at 1 : 1000.



Immunohistochemical analysis of paraffin-embedded Human breast cancer. Antibody was diluted at 1:100 (4°,overnight) . High-pressure and temperature Tris-EDTA,pH8.0 was used for antigen retrieval. Negative contrl (right) obtained from antibody was pre-absorbed by immunogen peptide.