
Product Name: Spi-C Rabbit Polyclonal Antibody**Catalog #: APRab18192**

For research use only.

Summary

Description	Rabbit polyclonal Antibody
Host	Rabbit
Application	WB,IHC,ELISA
Reactivity	Human,Rat,Mouse
Conjugation	Unconjugated
Modification	Unmodified
Isotype	IgG
Clonality	Polyclonal
Form	Liquid
Concentration	1mg/ml
Storage	Aliquot and store at -20°C (valid for 12 months). Avoid freeze/thaw cycles.
Shipping	Ice bags
Buffer	Liquid in PBS containing 50% glycerol, 0.5% protective protein and 0.02% New type preservative N.
Purification	Affinity purification

Application

Dilution Ratio	WB 1:500-1:2000,IHC 1:50-1:300,ELISA 1:2000-1:20000
Molecular Weight	29kDa

Antigen Information

Gene Name	SPIC
Alternative Names	SPIC; Transcription factor Spi-C
Gene ID	121599.0
SwissProt ID	Q8N5J4
Immunogen	The antiserum was produced against synthesized peptide derived from human SPIC. AA range:131-180

Background

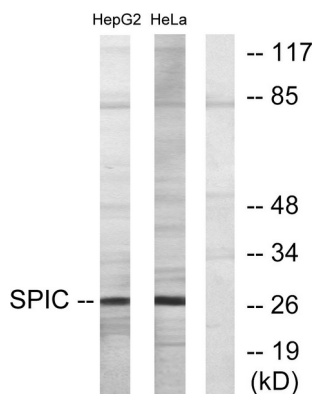
The protein encoded by this gene regulates the development of red pulp macrophages, which are necessary for iron

homeostasis and the recycling of red blood cells. [provided by RefSeq, Aug 2016],function:Probable transcription factor that binds to the PU-box, a purine-rich DNA sequence (5'-GAGGA[AT]-3') that can act as a lymphoid-specific enhancer.,similarity:Belongs to the ETS family.,similarity:Contains 1 ETS DNA-binding domain.,subunit:Binds DNA as a monomer.,tissue specificity:Preferentially detected in fetal and adult spleen, lymph nodes and at lower levels in bone marrow and fetal liver.,

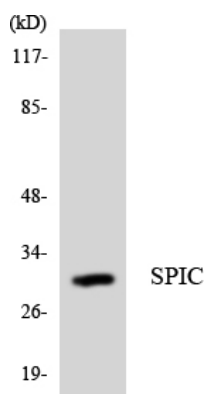
Research Area

Epigenetics and Nuclear Signaling; Transcription; Domain Families; Ets; Transcription Factors

Image Data



Western blot analysis of lysates from HepG2 and HeLa cells, using SPIC Antibody. The lane on the right is blocked with the synthesized peptide.



Western blot analysis of the lysates from Jurkat cells using SPIC antibody.



Western Blot analysis of various cells using Spi-C Polyclonal Antibody.