
Product Name: Spectrin β V Rabbit Polyclonal Antibody**Catalog #: APRab18179**

For research use only.

Summary

Description	Rabbit polyclonal Antibody
Host	Rabbit
Application	IHC,ICC/IF,ELISA
Reactivity	Human,Rat,Mouse
Conjugation	Unconjugated
Modification	Unmodified
Isotype	IgG
Clonality	Polyclonal
Form	Liquid
Concentration	1mg/ml
Storage	Aliquot and store at -20°C (valid for 12 months). Avoid freeze/thaw cycles.
Shipping	Ice bags
Buffer	Liquid in PBS containing 50% glycerol, 0.5% protective protein and 0.02% New type preservative N.
Purification	Affinity purification

Application

Dilution Ratio IHC 1:100-1:300,ICC/IF 1:50-1:200,ELISA 1:20000-1:40000

Molecular Weight

Antigen Information

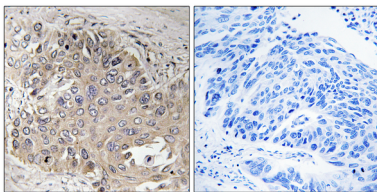
Gene Name	SPTBN5
Alternative Names	SPTBN5; BSPECV; HUBSPECV; HUSPECV; Spectrin beta chain; non-erythrocytic 5; Beta-V spectrin
Gene ID	51332.0
SwissProt ID	Q9NRC6
Immunogen	The antiserum was produced against synthesized peptide derived from human SPTBN5. AA range:481-530

Background

similarity:Belongs to the spectrin family.,similarity:Contains 1 PH domain.,similarity:Contains 2 CH (calponin-homology) domains.,similarity:Contains 31 spectrin repeats.,subcellular location:Detected prominently in the outer segments of photoreceptor rods and cones and in the basolateral membrane and cytosol of gastric epithelial cells.,subunit:Probably associates with an alpha chain.,tissue specificity:Expressed at very low levels in many tissues, with strongest expression in cerebellum, spinal cord, stomach, pituitary gland, liver, pancreas, salivary gland, kidney, bladder, and heart.,similarity:Belongs to the spectrin family.,similarity:Contains 1 PH domain.,similarity:Contains 2 CH (calponin-homology) domains.,similarity:Contains 31 spectrin repeats.,subcellular location:Detected prominently in the outer segments of photoreceptor rods and cones and in the basolateral membrane and cytosol of gastric epithelial cells.,subunit:Probably associates with an alpha chain.,tissue specificity:Expressed at very low levels in many tissues, with strongest expression in cerebellum, spinal cord, stomach, pituitary gland, liver, pancreas, salivary gland, kidney, bladder, and heart.,

Research Area

Image Data



Immunohistochemistry analysis of paraffin-embedded human lung carcinoma, using SPTBN5 Antibody. The picture on the right is blocked with the synthesized peptide.