

Summary

Production Name	SPARC Rabbit Polyclonal Antibody
Description	Rabbit Polyclonal Antibody
Host	Rabbit
Application	WB,IHC-P,IF-P,IF-F,ICC/IF,ELISA
Reactivity	Human,Mouse,Rat

Performance

Conjugation	Unconjugated
Modification	Unmodified
Isotype	IgG
Clonality	Polyclonal
Form	Liquid
Storage	Store at 4°C short term. Aliquot and store at -20°C long term. Avoid freeze/thaw cycles.
Buffer	Liquid in PBS containing 50% glycerol, 0.5% protective protein and 0.02% New type preservative N.
Purification	Affinity purification

Immunogen

Gene Name	SPARC
Alternative Names	SPARC; ON; SPARC; Basement-membrane protein 40; BM-40; Osteonectin; ON; Secreted protein acidic and rich in cysteine
Gene ID	6678.0
SwissProt ID	P09486.The antiserum was produced against synthesized peptide derived from the Internal region of human SPARC. AA range:141-190

Application

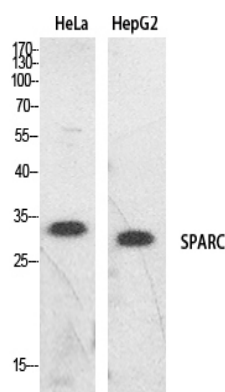
Dilution Ratio	WB 1:500-1:2000, IHC-P 1:100-1:300, ELISA 1:20000, IF-P/IF-F/ICC/IF 1:50-200
Molecular Weight	34kDa

Background

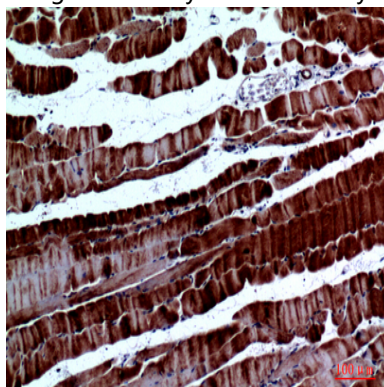
This gene encodes a cysteine-rich acidic matrix-associated protein. The encoded protein is required for the collagen in bone to become calcified but is also involved in extracellular matrix synthesis and promotion of changes to cell shape. The gene product has been associated with tumor suppression but has also been correlated with metastasis based on changes to cell shape which can promote tumor cell invasion. Three transcript variants encoding different isoforms have been found for this gene. [provided by RefSeq, Jun 2015], developmental stage: Expressed at high levels in tissues undergoing morphogenesis, remodeling and wound repair., function: Appears to regulate cell growth through interactions with the extracellular matrix and cytokines. Binds calcium and copper, several types of collagen, albumin, thrombospondin, PDGF and cell membranes. There are two calcium binding sites; an acidic domain that binds 5 to 8 Ca^{2+} with a low affinity and an EF-hand loop that binds a Ca^{2+} ion with a high affinity., online information: Osteonectin entry, similarity: Belongs to the SPARC family., similarity: Contains 1 EF-hand domain., similarity: Contains 1 follistatin-like domain., similarity: Contains 1 Kazal-like domain., subcellular location: In or around the basement membrane.,

Research Area

Image Data



Western Blot analysis of HeLa, HepG2 cells using SPARC Polyclonal Antibody.. Secondary antibody was diluted at 1:20000



Product Name: SPARC Rabbit Polyclonal Antibody
Catalog #: APRab18165



Immunohistochemical analysis of paraffin-embedded mouse-muscle, antibody was diluted at 1:100

Note

For research use only.