

Product Name: Sp2 Rabbit Polyclonal Antibody
Catalog #: APRab18150



Summary

Production Name	Sp2 Rabbit Polyclonal Antibody
Description	Rabbit Polyclonal Antibody
Host	Rabbit
Application	WB,IHC-P,IF-P,IF-F,ICC/IF,ELISA
Reactivity	Human,Mouse

Performance

Conjugation	Unconjugated
Modification	Unmodified
Isotype	IgG
Clonality	Polyclonal
Form	Liquid
Storage	Store at 4°C short term. Aliquot and store at -20°C long term. Avoid freeze/thaw cycles.
Buffer	Liquid in PBS containing 50% glycerol, 0.5% protective protein and 0.02% New type preservative N.
Purification	Affinity purification

Immunogen

Gene Name	SP2
Alternative Names	SP2; KIAA0048; Transcription factor Sp2
Gene ID	6668.0
SwissProt ID	Q02086.The antiserum was produced against synthesized peptide derived from human SP2. AA range:471-520

Application

Dilution Ratio	WB 1:500-1:2000, IHC-P 1:100-1:300, ELISA 1:20000, IF-P/IF-F/ICC/IF 1:50-200
Molecular Weight	64kDa

Product Name: Sp2 Rabbit Polyclonal Antibody
Catalog #: APRab18150

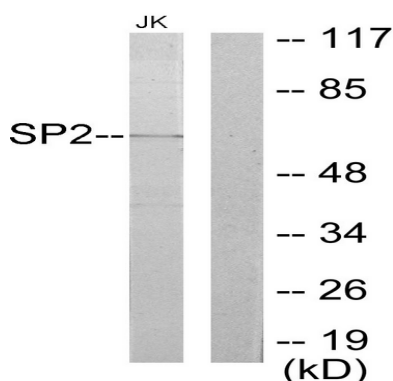


Background

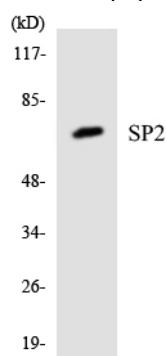
This gene encodes a member of the Sp subfamily of Sp/XKLF transcription factors. Sp family proteins are sequence-specific DNA-binding proteins characterized by an amino-terminal trans-activation domain and three carboxy-terminal zinc finger motifs. This protein contains the least conserved DNA-binding domain within the Sp subfamily of proteins, and its DNA sequence specificity differs from the other Sp proteins. It localizes primarily within subnuclear foci associated with the nuclear matrix, and can activate or in some cases repress expression from different promoters. [provided by RefSeq, Jul 2008],function: Binds to GC box promoters elements and selectively activates mRNA synthesis from genes that contain functional recognition sites.,similarity: Belongs to the Sp1 C2H2-type zinc-finger protein family.,similarity: Contains 3 C2H2-type zinc fingers.,

Research Area

Image Data



Western blot analysis of lysates from Jurkat cells, using SP2 Antibody. The lane on the right is blocked with the synthesized peptide.



Western blot analysis of the lysates from 293 cells using SP2 antibody.

Product Name: Sp2 Rabbit Polyclonal Antibody
Catalog #: APRab18150



Note

For research use only.