

Product Name: Sos 2 Rabbit Polyclonal Antibody**Catalog #: APRab18119**

For research use only.

Summary

Description	Rabbit polyclonal Antibody
Host	Rabbit
Application	WB,IHC,ELISA
Reactivity	Human,Rat,Mouse
Conjugation	Unconjugated
Modification	Unmodified
Isotype	IgG
Clonality	Polyclonal
Form	Liquid
Concentration	1mg/ml
Storage	Aliquot and store at -20°C (valid for 12 months). Avoid freeze/thaw cycles.
Shipping	Ice bags
Buffer	Liquid in PBS containing 50% glycerol, 0.5% protective protein and 0.02% New type preservative N.
Purification	Affinity purification

Application

Dilution Ratio	WB 1:500-1:2000,IHC 1:50-1:300,ELISA 1:2000-1:20000
Molecular Weight	150kDa

Antigen Information

Gene Name	SOS2
Alternative Names	SOS2; Son of sevenless homolog 2; SOS-2
Gene ID	6655.0
SwissProt ID	Q07890
Immunogen	The antiserum was produced against synthesized peptide derived from human SOS2. AA range:631-680

Background

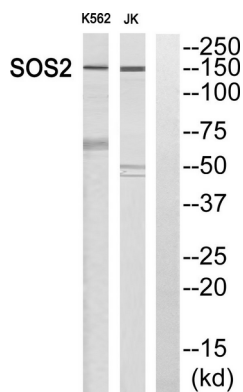
This gene encodes a regulatory protein that is involved in the positive regulation of ras proteins. Mutations in this gene are

associated with Noonan Syndrome-9. [provided by RefSeq, Jul 2016],function:Promotes the exchange of Ras-bound GDP by GTP.,online information:Son of sevenless entry,similarity:Contains 1 DH (DBL-homology) domain.,similarity:Contains 1 N-terminal Ras-GEF domain.,similarity:Contains 1 PH domain.,similarity:Contains 1 Ras-GEF domain.,

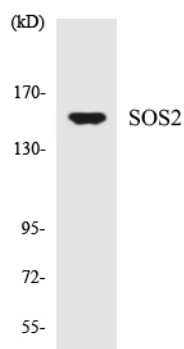
Research Area

MAPK_ERK_Growth;MAPK_G_Protein;ErbB_HER;Chemokine;Dorso-ventral axis formation;Focal adhesion;Gap junction;Jak_STAT;Natural killer cell mediated cytotoxicity;T_Cell_Receptor;B_Cell_Antigen;Fc epsilon RI;Neurotrophin;Regulates Actin and Cytoskeleton;Insulin_Receptor;GnRH;Pathways in cancer;Colorectal cancer;Renal cell carcinoma;Endometrial cancer;Glioma;Prostate cancer;Chronic myeloid leukemia;Acute myeloid leukemia;Non-small cell lung cancer;

Image Data



Western blot analysis of SOS2 Antibody. The lane on the right is blocked with the SOS2 peptide.



Western blot analysis of the lysates from HT-29 cells using SOS2 antibody.