

Product Name: SnoN Rabbit Polyclonal Antibody**Catalog #: APRab18058**

For research use only.

Summary

Description	Rabbit polyclonal Antibody
Host	Rabbit
Application	WB,IHC,ICC/IF,ELISA
Reactivity	Human,Mouse
Conjugation	Unconjugated
Modification	Unmodified
Isotype	IgG
Clonality	Polyclonal
Form	Liquid
Concentration	1mg/ml
Storage	Aliquot and store at -20°C (valid for 12 months). Avoid freeze/thaw cycles.
Shipping	Ice bags
Buffer	Liquid in PBS containing 50% glycerol, 0.5% protective protein and 0.02% New type preservative N.
Purification	Affinity purification

Application

Dilution Ratio	WB 1:500-1:2000,IHC 1:100-1:300,ICC/IF 1:50-1:200,ELISA 1:20000-1:40000
Molecular Weight	77kDa

Antigen Information

Gene Name	SKIL
Alternative Names	SKIL; SNO; Ski-like protein; Ski-related oncogene; Ski-related protein
Gene ID	6498.0
SwissProt ID	P12757
Immunogen	The antiserum was produced against synthesized peptide derived from human SKIL. AA range:616-665

Background

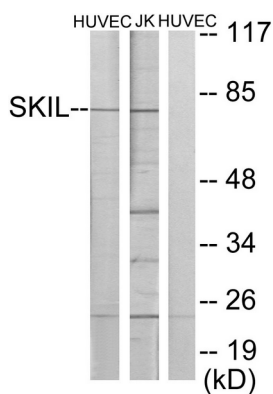
The protein encoded by this gene is a component of the SMAD pathway, which regulates cell growth and differentiation

through transforming growth factor-beta (TGFB). In the absence of ligand, the encoded protein binds to the promoter region of TGFB-responsive genes and recruits a nuclear repressor complex. TGFB signaling causes SMAD3 to enter the nucleus and degrade this protein, allowing these genes to be activated. Four transcript variants encoding three different isoforms have been found for this gene. [provided by RefSeq, Oct 2011],function:May have regulatory role in cell division or differentiation in response to extracellular signals.,similarity:Belongs to the SKI family.,subunit:Interacts with SMAD2, SMAD3 and RNF111.,tissue specificity:SNON and SNOA isoforms are widely expressed. Highest expression is found in skeletal muscle, followed by placenta and lung. Lowest expression in heart, brain and pancreas. Expression of isoform SNOI is restricted to skeletal muscle.,

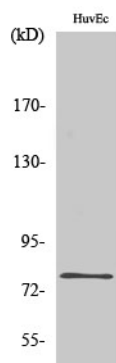
Research Area

Cancer; Oncoproteins/suppressors; Tumor suppressors; Epigenetics and Nuclear Signaling; Nuclear Signaling Pathways; SMADs

Image Data



Western blot analysis of lysates from HUVEC and Jurkat cells, using SKIL Antibody. The lane on the right is blocked with the synthesized peptide.



Western Blot analysis of various cells using SnoN Polyclonal Antibody diluted at 1:1000 cells nucleus extracted by Minute TM Cytoplasmic and Nuclear Fractionation kit (SC-003, Invent biotech, MN, USA) .