

Product Name: Snk Rabbit Polyclonal Antibody**Catalog #: APRab18056**

For research use only.

Summary

Description	Rabbit polyclonal Antibody
Host	Rabbit
Application	WB,IHC,ICC/IF,ELISA
Reactivity	Human,Mouse,Rat
Conjugation	Unconjugated
Modification	Unmodified
Isotype	IgG
Clonality	Polyclonal
Form	Liquid
Concentration	1mg/ml
Storage	Aliquot and store at -20°C (valid for 12 months). Avoid freeze/thaw cycles.
Shipping	Ice bags
Buffer	Liquid in PBS containing 50% glycerol, 0.5% protective protein and 0.02% New type preservative N.
Purification	Affinity purification

Application

Dilution Ratio	WB 1:500-1:2000,IHC 1:50-1:200,ICC/IF 1:50-1:200,ELISA 1:2000-1:20000
Molecular Weight	78kDa

Antigen Information

Gene Name	PLK2
Alternative Names	PLK2; SNK; Serine/threonine-protein kinase PLK2; Polo-like kinase 2; PLK-2; hPlk2; Serine/threonine-protein kinase SNK; hSNK; Serum-inducible kinase
Gene ID	10769.0
SwissProt ID	Q9NYY3
Immunogen	The antiserum was produced against synthesized peptide derived from human PLK2. AA range:291-340

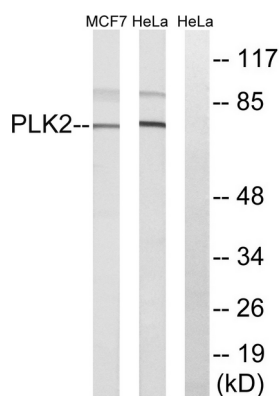
Background

The protein encoded by this gene is a member of the polo family of serine/threonine protein kinases that have a role in normal cell division. This gene is most abundantly expressed in testis, spleen and fetal tissues, and its expression is inducible by serum, suggesting that it may also play an important role in cells undergoing rapid cell division. Alternatively spliced transcript variants encoding different isoforms have been found for this gene. [provided by RefSeq, Nov 2011], catalytic activity: ATP + a protein = ADP + a phosphoprotein., function: May play a role in the division of at least some cell types, such as fibroblasts, and could function in embryogenesis, wound healing or neoplasia., similarity: Belongs to the protein kinase superfamily., similarity: Belongs to the protein kinase superfamily. Ser/Thr protein kinase family. CDC5/Polo subfamily., similarity: Contains 1 protein kinase domain., similarity: Contains 2 POLO box domains.,

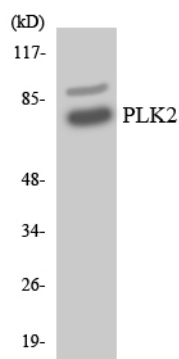
Research Area

Signal Transduction; Protein Phosphorylation; Ser / Thr Kinases; Other Kinases

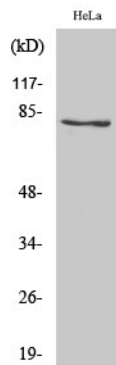
Image Data



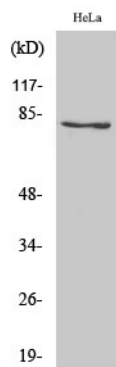
Western blot analysis of lysates from HeLa and MCF-7 cells, using PLK2 Antibody. The lane on the right is blocked with the synthesized peptide.



Western blot analysis of the lysates from HeLa cells using PLK2 antibody.



Western Blot analysis of various cells using Snk Polyclonal Antibody



Western Blot analysis of MCF7 cells using Snk Polyclonal Antibody