
Product Name: SNAP 23 Rabbit Polyclonal Antibody**Catalog #: APRab18043**

For research use only.

Summary

Description	Rabbit polyclonal Antibody
Host	Rabbit
Application	WB,IHC,ICC/IF,ELISA
Reactivity	Human,Rat,Mouse
Conjugation	Unconjugated
Modification	Unmodified
Isotype	IgG
Clonality	Polyclonal
Form	Liquid
Concentration	1mg/ml
Storage	Aliquot and store at -20°C (valid for 12 months). Avoid freeze/thaw cycles.
Shipping	Ice bags
Buffer	Liquid in PBS containing 50% glycerol, 0.5% protective protein and 0.02% New type preservative N.
Purification	Affinity purification

Application

Dilution Ratio	WB 1:500-1:2000,IHC 1:100-1:300,ICC/IF 1:50-1:200,ELISA 1:10000-1:20000
Molecular Weight	25kDa

Antigen Information

Gene Name	SNAP-23
Alternative Names	SNAP23; Synaptosomal-associated protein 23; SNAP-23; Vesicle-membrane fusion protein SNAP-23
Gene ID	8773.0
SwissProt ID	O00161
Immunogen	The antiserum was produced against synthesized peptide derived from the C-terminal region of human SNAP23. AA range:151-200

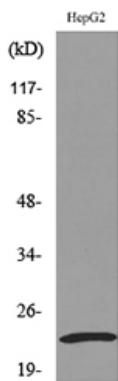
Background

Specificity of vesicular transport is regulated, in part, by the interaction of a vesicle-associated membrane protein termed synaptobrevin/VAMP with a target compartment membrane protein termed syntaxin. These proteins, together with SNAP25 (synaptosome-associated protein of 25 kDa), form a complex which serves as a binding site for the general membrane fusion machinery. Synaptobrevin/VAMP and syntaxin are believed to be involved in vesicular transport in most, if not all cells, while SNAP25 is present almost exclusively in the brain, suggesting that a ubiquitously expressed homolog of SNAP25 exists to facilitate transport vesicle/target membrane fusion in other tissues. The protein encoded by this gene is structurally and functionally similar to SNAP25 and binds tightly to multiple syntaxins and synaptobrevins/VAMPs. It is an essential component of the high affinity receptor for the function: Essential component of the high affinity receptor for the general membrane fusion machinery and an important regulator of transport vesicle docking and fusion., similarity: Belongs to the SNAP-25 family., similarity: Contains 2 t-SNARE coiled-coil homology domains., subcellular location: Mainly localized to the plasma membrane., subunit: Binds simultaneously to SNAP25BP and SYN4. Found in a complex with VAMP8 and STX4 in pancreas (By similarity). Binds tightly to multiple syntaxins and synaptobrevins/VAMPs. Found in a complex with VAMP8 and STX1A., tissue specificity: Ubiquitous. Highest levels where found in placenta.,

Research Area

SNARE interactions in vesicular transport;

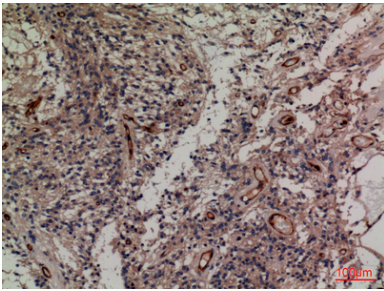
Image Data



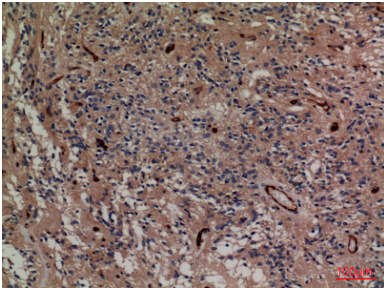
Western blot analysis of lysate from HepG2 cells, using SNAP23 Antibody.



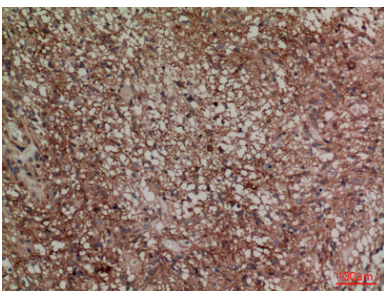
Western Blot analysis of HepG2 cells using SNAP 23 Polyclonal Antibody.. Secondary antibody was diluted at 1:20000



Immunohistochemical analysis of paraffin-embedded human-ovary-cancer, antibody was diluted at 1:100



Immunohistochemical analysis of paraffin-embedded human-ovary-cancer, antibody was diluted at 1:100



Immunohistochemical analysis of paraffin-embedded mouse-brain, antibody was diluted at 1:100