

Summary

Production Name	Smo Rabbit Polyclonal Antibody
Description	Rabbit Polyclonal Antibody
Host	Rabbit
Application	WB,ELISA
Reactivity	Human,Mouse,Rat

Performance

Conjugation	Unconjugated
Modification	Unmodified
Isotype	IgG
Clonality	Polyclonal
Form	Liquid
Storage	Store at 4°C short term. Aliquot and store at -20°C long term. Avoid freeze/thaw cycles.
Buffer	Liquid in PBS containing 50% glycerol, 0.5% protective protein and 0.02% New type preservative N.
Purification	Affinity purification

Immunogen

Gene Name	SMO
Alternative Names	SMO; SMOH; Smoothened homolog; SMO; Protein Gx
Gene ID	6608.0
SwissProt ID	Q99835.The antiserum was produced against synthesized peptide derived from human SMO. AA range:68-117

Application

Dilution Ratio	WB 1:500-1:2000, ELISA 1:10000.Not yet tested in other applications.
Molecular Weight	86kDa

Product Name: Smo Rabbit Polyclonal Antibody
Catalog #: APRab18026



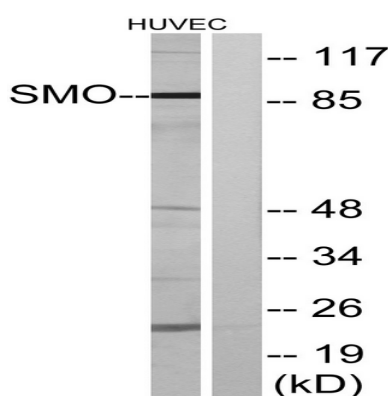
Background

The protein encoded by this gene is a G protein-coupled receptor that interacts with the patched protein, a receptor for hedgehog proteins. The encoded protein transduces signals to other proteins after activation by a hedgehog protein/patched protein complex. [provided by RefSeq, Jul 2010],disease:Defects in SMO are involved in basal cell carcinoma (BCC),function:G protein-coupled receptor that probably associates with the patched protein (PTCH) to transduce the hedgehog's proteins signal. Binding of sonic hedgehog (SHH) to its receptor patched is thought to prevent normal inhibition by patched of smoothened (SMO),similarity:Belongs to the G-protein coupled receptor Fz/Smo family, similarity:Contains 1 FZ (frizzled) domain.,

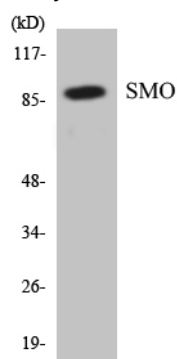
Research Area

Hedgehog;Pathways in cancer;Basal cell carcinoma;

Image Data



Western blot analysis of lysates from HUVEC cells, using SMO Antibody. The lane on the right is blocked with the synthesized peptide.



Western blot analysis of the lysates from HepG2 cells using SMO antibody.

Note

For research use only.

Product Name: Smo Rabbit Polyclonal Antibody
Catalog #: APRab18026

