

Product Name: SMIT Rabbit Polyclonal Antibody**Catalog #: APRab18024**

For research use only.

Summary

Description	Rabbit polyclonal Antibody
Host	Rabbit
Application	WB,IHC,ELISA
Reactivity	Human,Mouse,Rat
Conjugation	Unconjugated
Modification	Unmodified
Isotype	IgG
Clonality	Polyclonal
Form	Liquid
Concentration	1mg/ml
Storage	Aliquot and store at -20°C (valid for 12 months). Avoid freeze/thaw cycles.
Shipping	Ice bags
Buffer	Liquid in PBS containing 50% glycerol, 0.5% protective protein and 0.02% New type preservative N.
Purification	Affinity purification

Application

Dilution Ratio	WB 1:500-1:2000,IHC 1:50-1:300,ELISA 1:2000-1:20000
Molecular Weight	80kDa

Antigen Information

Gene Name	SLC5A3
Alternative Names	SLC5A3; Sodium/myo-inositol cotransporter; Na(+)/myo-inositol cotransporter; Sodium/myo-inositol transporter 1; SMIT1; Solute carrier family 5 member 3
Gene ID	6526.0
SwissProt ID	P53794
Immunogen	The antiserum was produced against synthesized peptide derived from human SLC5A3. AA range:221-270

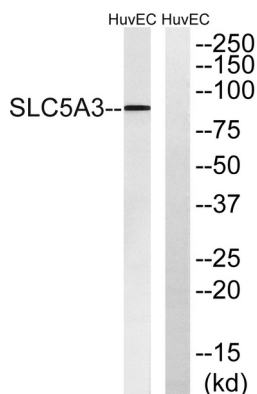
Background

function:Prevents intracellular accumulation of high concentrations of myo-inositol (an osmolyte) that result in impairment of cellular function.,similarity:Belongs to the sodium:solute symporter (SSF) (TC 2.A.21) family.,function:Prevents intracellular accumulation of high concentrations of myo-inositol (an osmolyte) that result in impairment of cellular function.,similarity:Belongs to the sodium:solute symporter (SSF) (TC 2.A.21) family.,

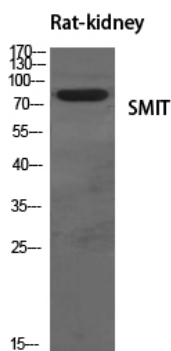
Research Area

Signal Transduction; Metabolism; Plasma Membrane; Channels; Neuroscience; Neurology process; Neurogenesis; Types of disease; Cancer

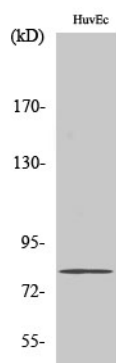
Image Data



Western blot analysis of lysates from HUVEC cells, using SLC5A3 Antibody. The lane on the right is blocked with the synthesized peptide.



Western Blot analysis of various cells using SMIT Polyclonal Antibody diluted at 1: 500



Western Blot analysis of HuvEc cells using SMIT Polyclonal Antibody diluted at 1: 500