
Product Name: Smad6 Rabbit Polyclonal Antibody**Catalog #: APRab18000**

For research use only.

Summary

| | |
|----------------------|---|
| Description | Rabbit polyclonal Antibody |
| Host | Rabbit |
| Application | WB,IHC,ICC/IF,ELISA |
| Reactivity | Human,Mouse |
| Conjugation | Unconjugated |
| Modification | Unmodified |
| Isotype | IgG |
| Clonality | Polyclonal |
| Form | Liquid |
| Concentration | 1mg/ml |
| Storage | Aliquot and store at -20°C (valid for 12 months). Avoid freeze/thaw cycles. |
| Shipping | Ice bags |
| Buffer | Liquid in PBS containing 50% glycerol, 0.5% protective protein and 0.02% New type preservative N. |
| Purification | Affinity purification |

Application

| | |
|-------------------------|---|
| Dilution Ratio | WB 1:500-1:2000,IHC 1:100-1:300,ICC/IF 1:50-1:200,ELISA 1:20000-1:40000 |
| Molecular Weight | 62kDa |

Antigen Information

| | |
|--------------------------|--|
| Gene Name | SMAD6 |
| Alternative Names | SMAD6; MADH6; Mothers against decapentaplegic homolog 6; MAD homolog 6; Mothers against DPP homolog 6; SMAD family member 6; SMAD 6; Smad6; hSMAD6 |
| Gene ID | 4091.0 |
| SwissProt ID | O43541 |
| Immunogen | The antiserum was produced against synthesized peptide derived from human Smad6. AA range:323-372 |

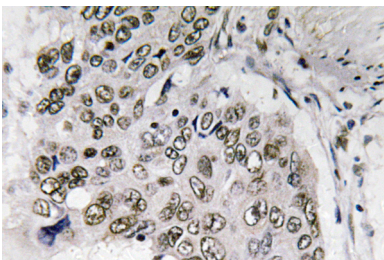
Background

The protein encoded by this gene belongs to the SMAD family of proteins, which are related to *Drosophila* 'mothers against decapentaplegic' (Mad) and *C. elegans* Sma. SMAD proteins are signal transducers and transcriptional modulators that mediate multiple signaling pathways. This protein functions in the negative regulation of BMP and TGF-beta/activin-signalling. Multiple transcript variants have been found for this gene.[provided by RefSeq, Sep 2014],function:Antagonist of signaling by TGF-beta (transforming growth factor) type 1 receptor superfamily members; has been shown to inhibit selectively BMP (bone morphogenetic proteins) signaling by competing with the co-SMAD SMAD4 for receptor-activated SMAD1. SMAD6 is an inhibitory SMAD (I-SMAD) or antagonistic SMAD. Binds to regulatory elements in target promoter regions.,PTM:Phosphorylated by BMP type 1 receptor kinase and by PRKX.,similarity:Belongs to the dwarfin/SMAD family.,similarity:Contains 1 MH1 (MAD homology 1) domain.,similarity:Contains 1 MH2 (MAD homology 2) domain.,subunit:Interacts with NEDD4L (By similarity). Interacts with RNF111 and AXIN1. Interacts with TGF-beta type I receptor superfamily members, SMAD1, HOXC8 and HOXC9. Interacts with STAMBP and PRKX.,tissue specificity:Ubiquitous in various organs, with higher levels in lung. Isoform B is up-regulated in diseased heart tissue.,

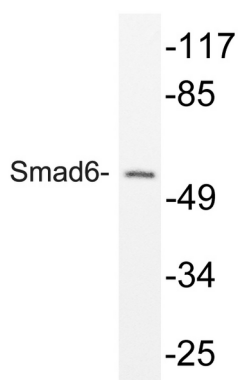
Research Area

TGF-beta;

Image Data



Immunohistochemistry analysis of Smad6 antibody in paraffin-embedded human lung carcinoma tissue.



Western blot analysis of lysate from mouse brain, using Smad6 antibody.