

**Product Name: Smad5 Rabbit Polyclonal Antibody****Catalog #: APRab17999**

For research use only.

**Summary**

<b>Description</b>	Rabbit polyclonal Antibody
<b>Host</b>	Rabbit
<b>Application</b>	WB,IHC,ICC/IF,ELISA
<b>Reactivity</b>	Human,Rat
<b>Conjugation</b>	Unconjugated
<b>Modification</b>	Unmodified
<b>Isotype</b>	IgG
<b>Clonality</b>	Polyclonal
<b>Form</b>	Liquid
<b>Concentration</b>	1mg/ml
<b>Storage</b>	Aliquot and store at -20°C (valid for 12 months). Avoid freeze/thaw cycles.
<b>Shipping</b>	Ice bags
<b>Buffer</b>	Liquid in PBS containing 50% glycerol, 0.5% protective protein and 0.02% New type preservative N.
<b>Purification</b>	Affinity purification

**Application**

<b>Dilution Ratio</b>	WB 1:500-1:2000,IHC 1:100-1:300,ICC/IF 1:50-1:200,ELISA 1:20000-1:40000
<b>Molecular Weight</b>	52kDa

**Antigen Information**

<b>Gene Name</b>	SMAD5
<b>Alternative Names</b>	SMAD5; MADH5; Mothers against decapentaplegic homolog 5; MAD homolog 5; Mothers against DPP homolog 5; JV5-1; SMAD family member 5; SMAD 5; Smad5; hSmad5
<b>Gene ID</b>	4090.0
<b>SwissProt ID</b>	Q99717
<b>Immunogen</b>	Synthesized peptide derived from the Internal region of human Smad5.

**Background**

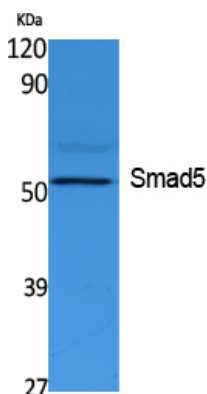
The protein encoded by this gene is involved in the transforming growth factor beta signaling pathway that results in an

inhibition of the proliferation of hematopoietic progenitor cells. The encoded protein is activated by bone morphogenetic proteins type 1 receptor kinase, and may be involved in cancer. Alternative splicing results in multiple transcript variants. [provided by RefSeq, Feb 2014],function:Transcriptional modulator activated by BMP (bone morphogenetic proteins) type 1 receptor kinase. SMAD5 is a receptor-regulated SMAD (R-SMAD),,PTM:Phosphorylated on serine by BMP (bone morphogenetic proteins) type 1 receptor kinase,,PTM:Ubiquitin-mediated proteolysis by SMAD-specific E3 ubiquitin ligase SMURF1,,similarity:Belongs to the dwarfin/SMAD family,,similarity:Contains 1 MH1 (MAD homology 1) domain,,similarity:Contains 1 MH2 (MAD homology 2) domain,,subcellular location:Cytoplasmic in the absence of ligand. Migrates to the nucleus when complexed with SMAD4,,subunit:May form trimers with the co-SMAD SMAD4. Interacts with PEBP2-alpha subunit and SMURF1. Interacts with SUV39H1 and SUV39H2,,tissue specificity:Ubiquitous,,

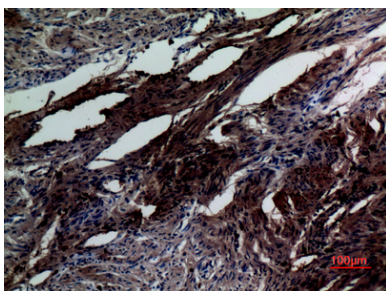
## Research Area

TGF-beta;

## Image Data



Western Blot analysis of extracts from K562 cells, using Smad5 Polyclonal Antibody.. Secondary antibody was diluted at 1:20000



Immunohistochemical analysis of paraffin-embedded human-uterus, antibody was diluted at 1:100