

---

**Product Name: SLC6A8 Rabbit Polyclonal Antibody****Catalog #: APRab17963**

For research use only.

**Summary**

<b>Description</b>	Rabbit polyclonal Antibody
<b>Host</b>	Rabbit
<b>Application</b>	WB,IHC
<b>Reactivity</b>	Human,Mouse,Rat
<b>Conjugation</b>	Unconjugated
<b>Modification</b>	Unmodified
<b>Isotype</b>	IgG
<b>Clonality</b>	Polyclonal
<b>Form</b>	Liquid
<b>Concentration</b>	1mg/ml
<b>Storage</b>	Aliquot and store at -20°C (valid for 12 months). Avoid freeze/thaw cycles.
<b>Shipping</b>	Ice bags
<b>Buffer</b>	Liquid in PBS containing 50% glycerol, 0.5% protective protein and 0.02% New type preservative N.
<b>Purification</b>	Affinity purification

**Application**

<b>Dilution Ratio</b>	WB 1:500-1:2000,IHC 1:50-1:300
<b>Molecular Weight</b>	70kDa

**Antigen Information**

<b>Gene Name</b>	SLC6A8
<b>Alternative Names</b>	SLC6A8; Sodium- and chloride-dependent creatine transporter 1; CT1; Creatine transporter 1; Solute carrier family 6 member 8
<b>Gene ID</b>	6535.0
<b>SwissProt ID</b>	P48029
<b>Immunogen</b>	The antiserum was produced against synthesized peptide derived from human SLC6A8. AA range:581-630

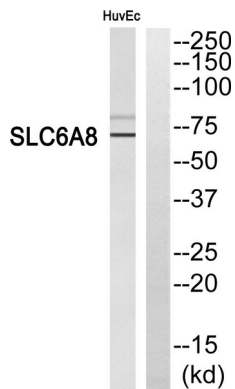
**Background**

The protein encoded by this gene is a plasma membrane protein whose function is to transport creatine into and out of cells. Defects in this gene can result in X-linked creatine deficiency syndrome. Multiple transcript variants encoding different isoforms have been found for this gene. [provided by RefSeq, Dec 2008],disease:Defects in SLC6A8 are the cause of X-linked creatine deficiency syndrome [MIM:300352]. X-linked creatine deficiency syndrome causes developmental delay, hypotonia, mental retardation, seizures, short stature and midface hypoplasia.,function:Required for the uptake of creatine in muscles and brain.,similarity:Belongs to the sodium:neurotransmitter symporter (SNF) family.,tissue specificity:Predominantly expressed in skeletal muscle and kidney. Also found in brain, heart, colon, testis and prostate.,

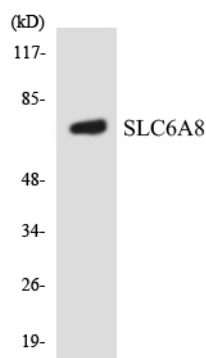
## Research Area

Signal Transduction; Metabolism; Plasma Membrane; Channels

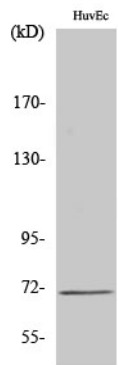
## Image Data



Western blot analysis of SLC6A8 Antibody. The lane on the right is blocked with the SLC6A8 peptide.



Western blot analysis of the lysates from HUVEC cells using SLC6A8 antibody.



Western Blot analysis of various cells using SLC6A8 Polyclonal Antibody